

7

L-47 F.B. 73 H 10-63

Twp 39 Rge. 37 Sect 22+23

Tie of F.C.F. traverse to <sup>628</sup> Sect

Int. P. sect. line + F.C.F. traverse

conc. mound B.B.T. "Old Light Post"  
in gr. beside mound.

conc. mound. "Butler Barnett + Taylor"

L-47 F.B. 73 H

W. Waller

+ dope land

+ Heaton

+ Van Edwards

+ Consocha

+ Saldia

F.C.F. 2485

1236.65

90°

11.27.01.45

4.17.28.30

11.29.04.45

C/O. 330.55.08

E.S.E. 1/4

87° 1378.33

B87

1.58.21.00

27 26

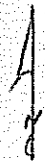
1.353.35.30

11.58.23.53

C/O. 271.36.62

M.P.  
35

F.C.F. 2484



Twp 39 Rge 37

Sect 27+26

55.97.32  
828

27 26

8

L-47 F.B. 73 H

10-63

Twp 38 Rge 37

COND. MOUNT B.B.T.

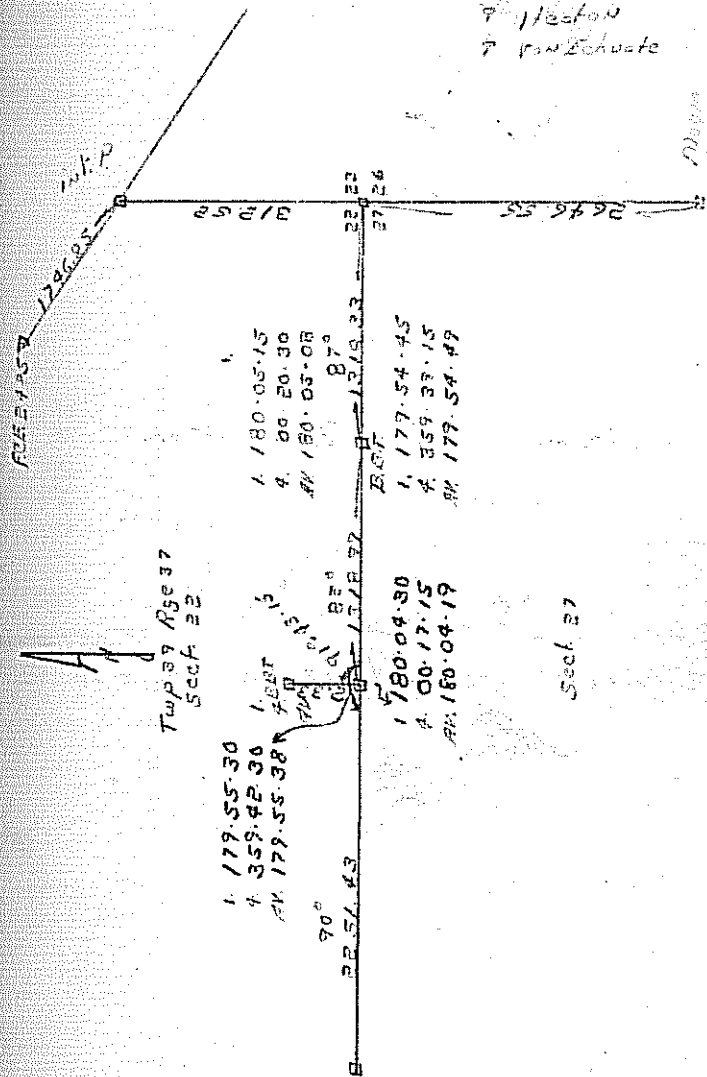
COND. MOUNT Butler Barnett &amp; Taylor

BYE HUB OFFSET D.B.T. MOUNT

BYE HUB

L-47 F.B. 73 H

8

M. Waller  
T. Capetoul  
P. Weston  
P. van Schuete1. 179.55.30  
4. 359.42.30  
AV. 179.55.381. 180.05.15  
4. 00.20.30  
AV. 180.05.081. 179.54.49  
4. 359.37.15  
AV. 179.54.49

Sect 27

