

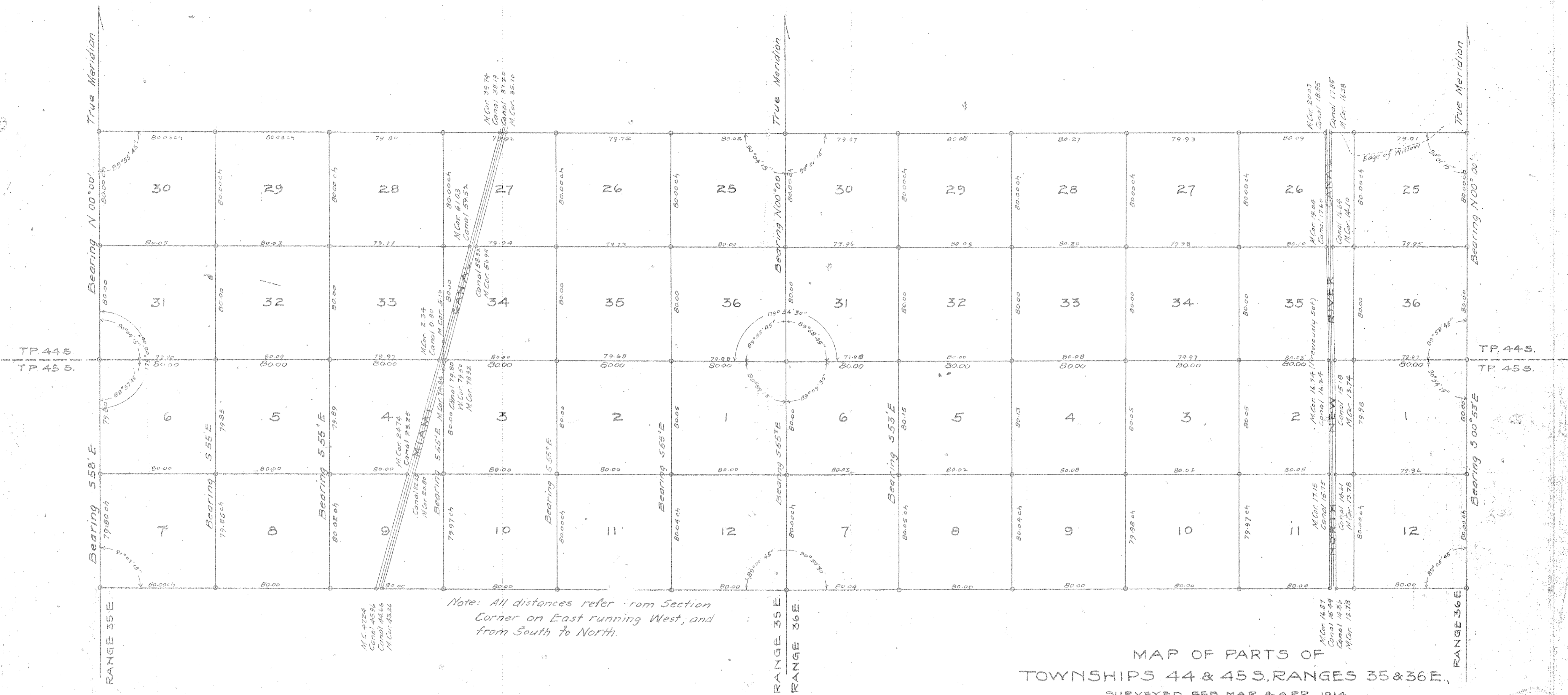
M.C. 4224
Canal 4534
Canal 4246
M.C. 4324

Note: All distances refer from Section Corner on East running West, and from South to North.

M.C. 1487
Canal 1544
Canal 1486
M.C. 1378

MAP OF PARTS OF
TOWNSHIPS 44 & 45 S, RANGES 35 & 36 E,
SURVEYED FEB, MAR. & APR., 1914
In accordance with instructions from
F. C. ELLIOTT, CHIEF DRAINAGE ENGR.
FOR
TRUSTEES OF INTERNAL IMPROVEMENT BOARD
In contract with Thos. E. Frederick, Miami, Fla.
Scale 1" = 40 chains.





Note: All distances refer from Section Corner on East running West; and from South to North.

MAP OF PARTS OF
 TOWNSHIPS 44 & 45 S., RANGES 35 & 36 E.,
 SURVEYED FEB., MAR. & APR., 1914
 In accordance with instructions from
 F. C. ELLIOTT, CHIEF DRAINAGE ENGR.
 FOR
 TRUSTEES OF INTERNAL IMPROVEMENT BOARD
 In contract with Thos. E. Frederick, Miami, Fla.
 Scale 1" = 40 chains.

