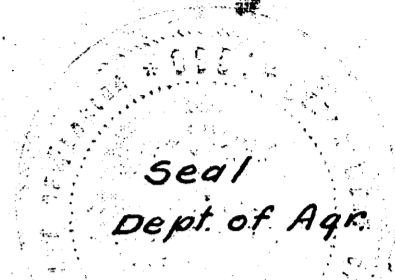
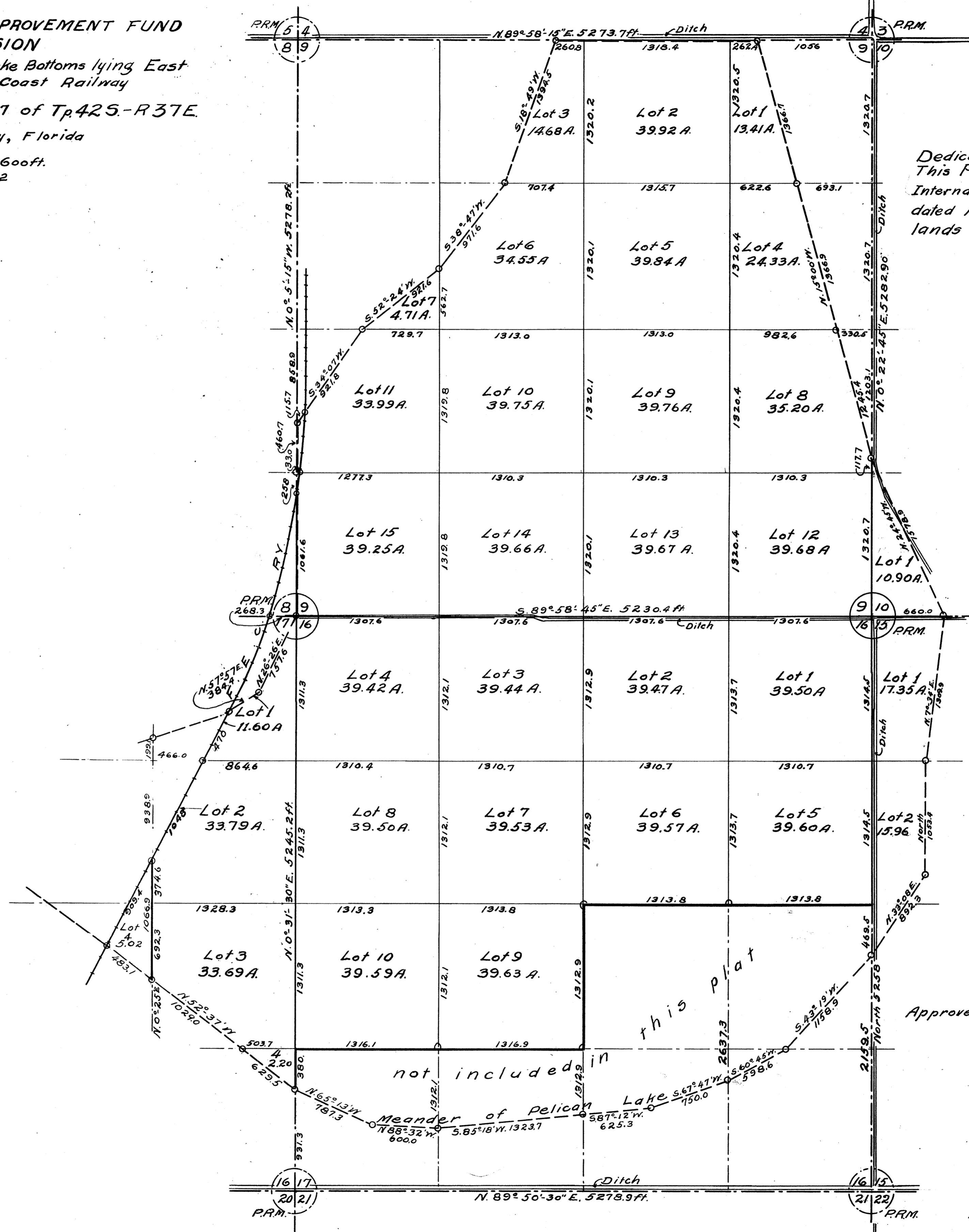
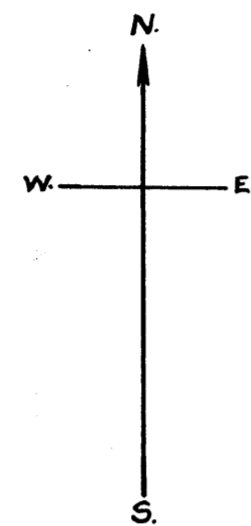


**TRUSTEES INTERNAL IMPROVEMENT FUND  
SUBDIVISION**  
of that portion of Pelican Lake Bottoms lying East  
of the Florida East Coast Railway  
in Sections 9-10-15-16 & 17 of T<sub>p</sub>425-R37E  
Palm Beach County, Florida

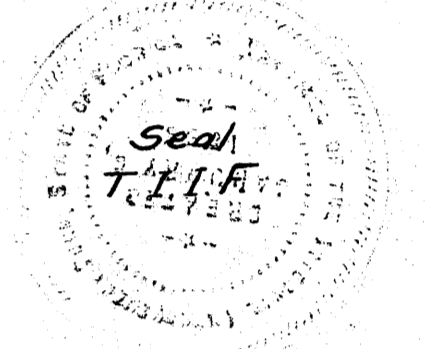
Scale 1 in. = 600 ft.  
Oct 20 - 1932



**Dedication and Acknowledgement.**  
This Plat was adopted by the Trustees of the  
Internal Improvement Fund by resolution  
dated Nov. 9 1932 as the official plat of the  
lands described in the title hereof.

*Raymond J. Barrett* Gov. & ch.  
*Samuel J. ...* Comptroller  
*Edwin P. ...* Atty. Gen.  
*W. V. Knott* State Treas.  
*Raymond J. Barrett* Comr. of Agr.

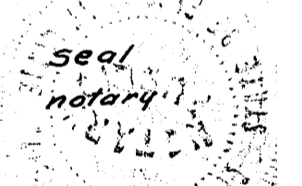
as and composing the Trustees of the  
Internal Improvement Fund of the  
State of Florida.



**Engineer's Certificate.**  
I certify that this plat is a correct  
representation of the lands platted and  
that Permanent Reference Monuments  
have been placed as required by sect.  
3107 Comp. Gen. Laws - 1927 and that  
survey and plat were executed by  
authority of Sect 1428 comp. Gen. Laws

*McEllish*  
Engr. for Trustees I. I. Fund  
Engrs. Regis. No 69  
Surveyors " " 80

*M. O. Barco*  
Notary Public, State of Florida at Large.  
My Commission Expires July 10, 1933.



Approved by Board of County Commissioners  
of Palm Beach County, Florida.  
By \_\_\_\_\_  
County Engineer

**Note**  
All distances are indicated in feet.  
All section corners are marked with  
State Standard Bronze Markers.  
All other P.R.M's. are gal. Iron pipe  
3 in. diam. capped.  
Only the parcels indicated as Lots  
are included in this plat.

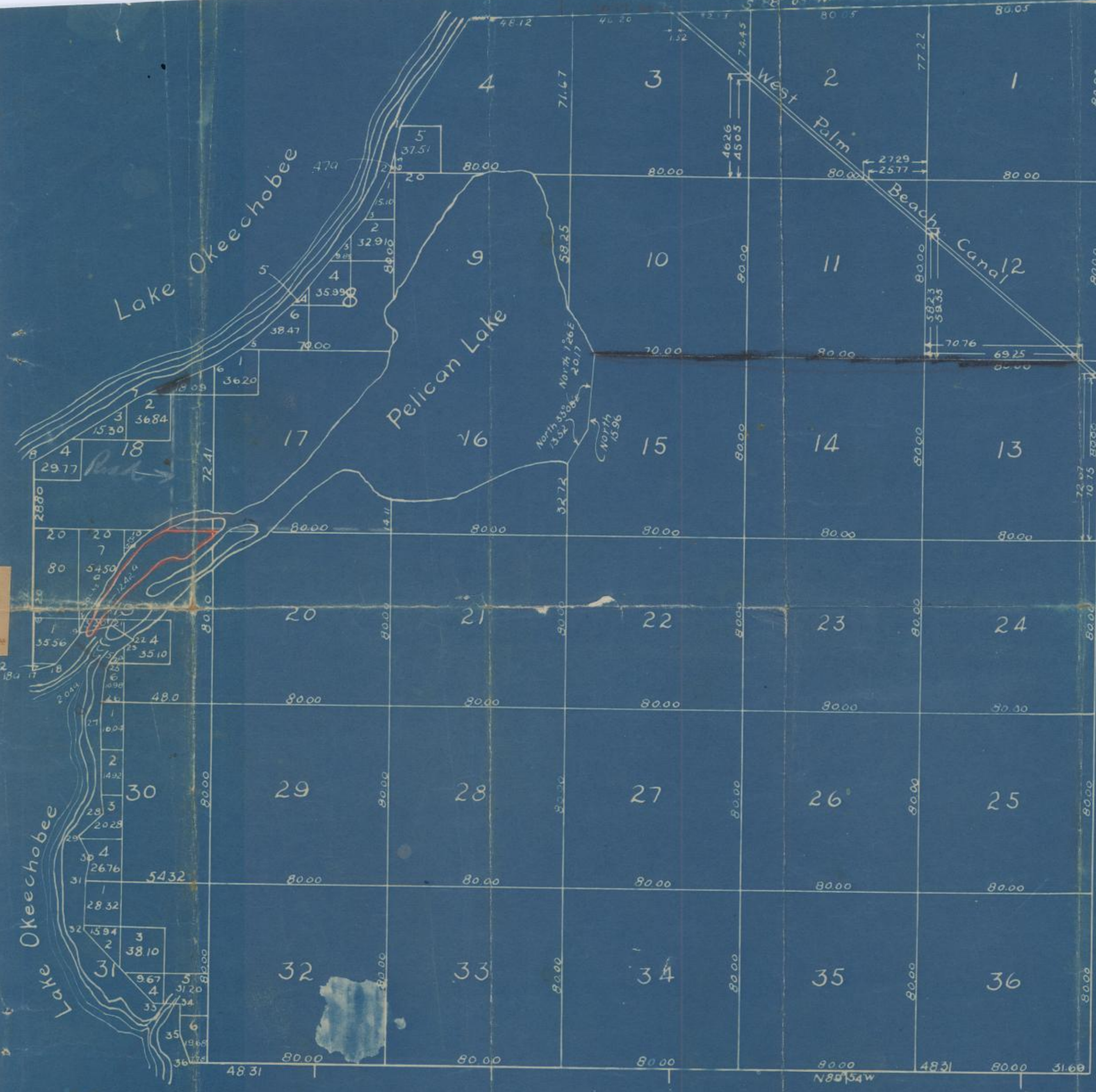
Copy of this plat has been filed in the  
Office of the Commissioner of Agriculture as  
provided for by Sect. 1430 Comp. Gen. Laws 1927.  
*Talbot* Commissioner of Agriculture

*McEllish* C.E.  
Surveyor  
Oct 20 - 1932.

42-3

42-37

TOWNSHIP 42 S, RANGE 37 E  
 STATE OF FLORIDA  
 SURVEYED IN 1916  
 In accordance with instructions from  
 F. C. Elliot, Chief Drainage Engineer  
 For the Trustees of the  
**INTERNAL IMPROVEMENT FUND**  
 In contract with Otis A. Hardin  
 Scale: 1 in = 40 chains



Sec	Acres	Sec	Acres	Sec	Acres
1	628.88	15	606.63	27	640.00
2	606.60	16	172.00	28	640.00
3	584.48	17	474.21	29	640.00
4	475.40	18	426.84	30	381.53
5	00.47	19	543.79	31	273.73
8	256.31	20	632.00	32	640.00
9	142.00	21	640.00	33	640.00
10	629.00	22	640.00	34	640.00
11	640.00	23	640.00	35	640.00
12	640.00	24	640.00	36	640.00
13	640.00	25	640.00		
14	640.00	26	640.00		
Total acres					

Sta	Course	Distance
1	S 30° 22' W	55.80 chains
2	S 13° 23' W	2.40 "
3	S 31° 02' W	18.28 "
4	S 38° 56' W	50.55 "
5	S 47° 31' W	37.01 "
6	S 52° 48' W	12.55 "
7	S 66° 56' W	35.19 "
8	S 57° 57' W	56.18 "
18	N 80° 46' E	10.16 "
19	N 36° 59' E	16.39 "
20	N 72° 28' E	10.75 "
21	N 80° 55' E	5.06 "
22	S 66° 58' E	13.95 "
23	S 70° 03' W	4.16 "
24	S 55° 02' W	7.19 "
25	S 22° 09' W	7.03 "
26	S 10° 30' W	17.48 "
27	S 1° 31' W	9.02 "
28	S 2° 08' E	42.97 "
29	S 51° 31' W	8.84 "
30	S 5° 55' E	9.69 "
31	S 15° 25' W	11.93 "
32	S 0° 53' E	23.23 "
33	S 45° 01' E	44.03 "
34	S 86° 01' E	11.70 "
35	S 03° 17' W	13.99 "
36	S 13° 29' E	11.11 "

COPIES OF THIS ARTICLE IS  
 REQUESTED TO MAIL IT  
 TO  
 CENTRAL and SOUTHERN FLORIDA  
 FLOOD CONTROL DISTRICT  
 P. O. BOX 1071  
 WEST PALM BEACH, FLORIDA  
 REFUND OF POSTAGE IS GUARANTEED

Northern boundary corrected to agree with  
 U.S. Survey of south boundary of T. 41 S. R. 37 E.

