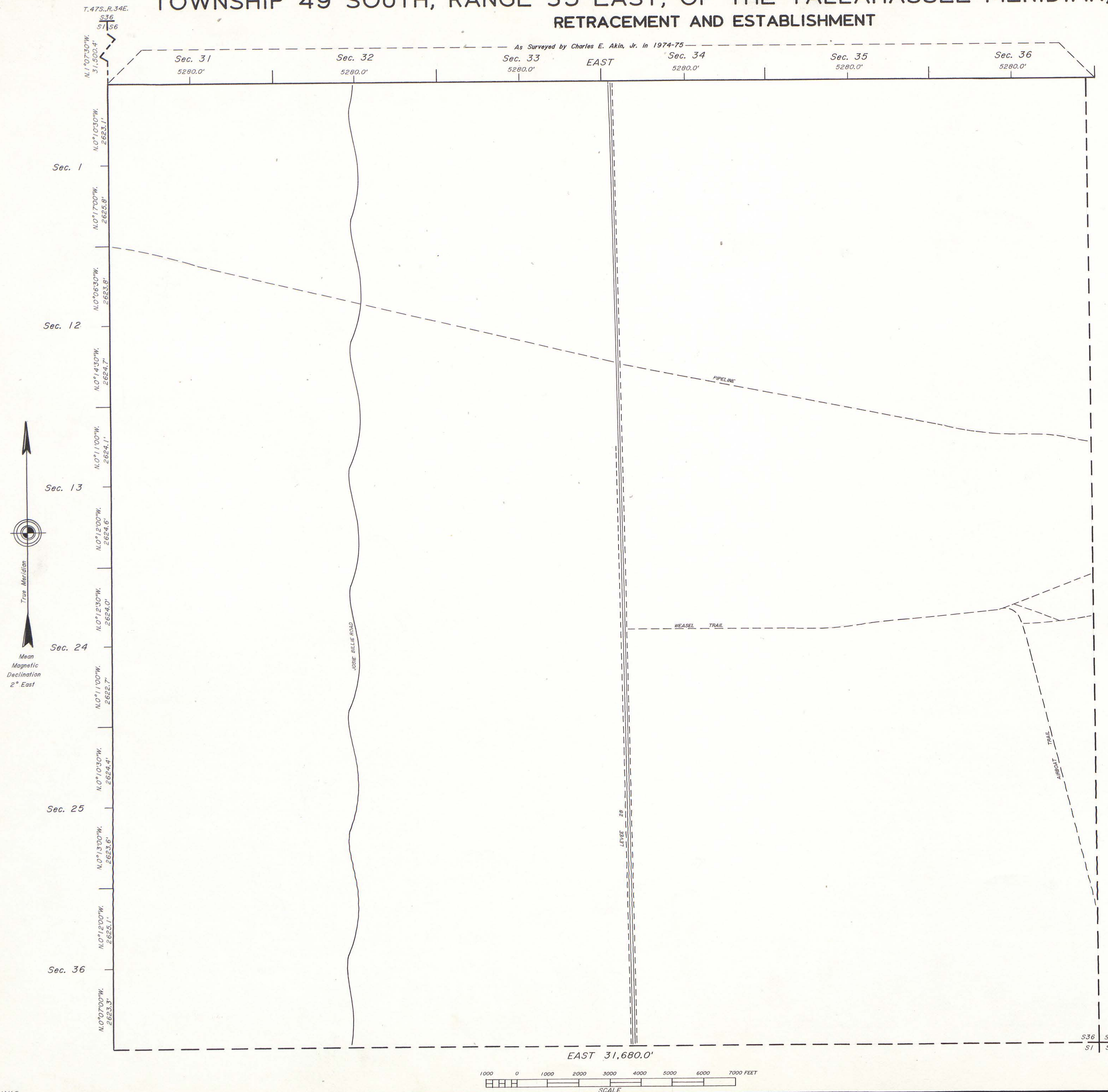


TOWNSHIP 49 SOUTH, RANGE 35 EAST, OF THE TALLAHASSEE MERIDIAN, FLORIDA. RETRACEMENT AND ESTABLISHMENT



A history of surveys is contained in the field note record.

This plat represents the establishment of the corner of Tps. 49 and 50 S., Rs. 35 and 36 E., and the retracement of the west boundary, T. 49 S., R. 35 E., Tallahassee Meridian, Florida.

Survey executed by Corwyn James Rodine, Cadastral Surveyor, beginning July 2, 1984, and completed September 27, 1984, pursuant to Special Instructions for Group No. 179, Florida, dated June 11, 1984.

UNITED STATES DEPARTMENT OF THE INTERIOR
BUREAU OF LAND MANAGEMENT
Alexandria, Virginia February 5, 1985

This plat is strictly conformable to the approved field notes, and the survey, having been correctly executed in accordance with the requirements of law and the regulations of this Bureau, is hereby accepted.

For the Director

Harold J. Bauman
Chief Cadastral Surveyor
Eastern States Office

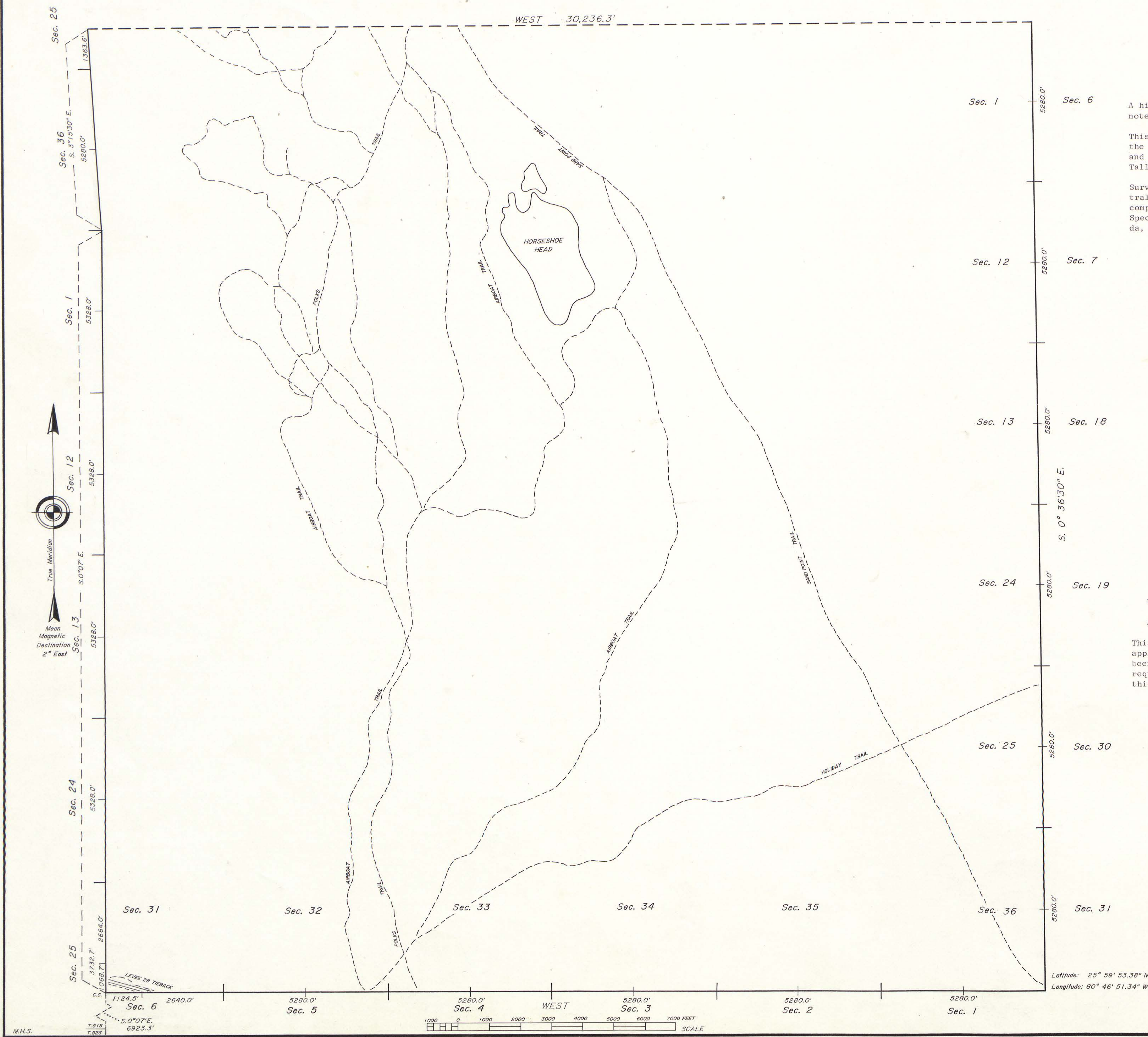
Latitude: 26° 10' 20.90" N.
Longitude: 80° 46' 58.71" W.

S36 S31
S1 S6

John

TOWNSHIP 51 SOUTH, RANGE 35 EAST, OF THE TALLAHASSEE MERIDIAN, FLORIDA.

DEPENDENT RESURVEY AND SURVEY



A history of surveys is contained in the field note record.

This plat represents the dependent resurvey of the west boundary and the survey of the east and south boundaries, T. 51 S., R. 35 E., Tallahassee Meridian, Florida.

Survey executed by Corwyn James Rodine, Cadastral Surveyor, beginning July 2, 1984, and completed September 27, 1984, pursuant to Special Instructions for Group No. 179, Florida, dated June 11, 1984.

UNITED STATES DEPARTMENT OF THE INTERIOR
BUREAU OF LAND MANAGEMENT
Alexandria, Virginia February 20, 1985

This plat is strictly conformable to the approved field notes, and the survey, having been correctly executed in accordance with the requirements of law and the regulations of this Bureau, is hereby accepted.

For the Director

Gene J. Bauman
Chief Cadastral Surveyor
Eastern States Office

Latitude: 25° 59' 53.38" N.
Longitude: 80° 46' 51.34" W.