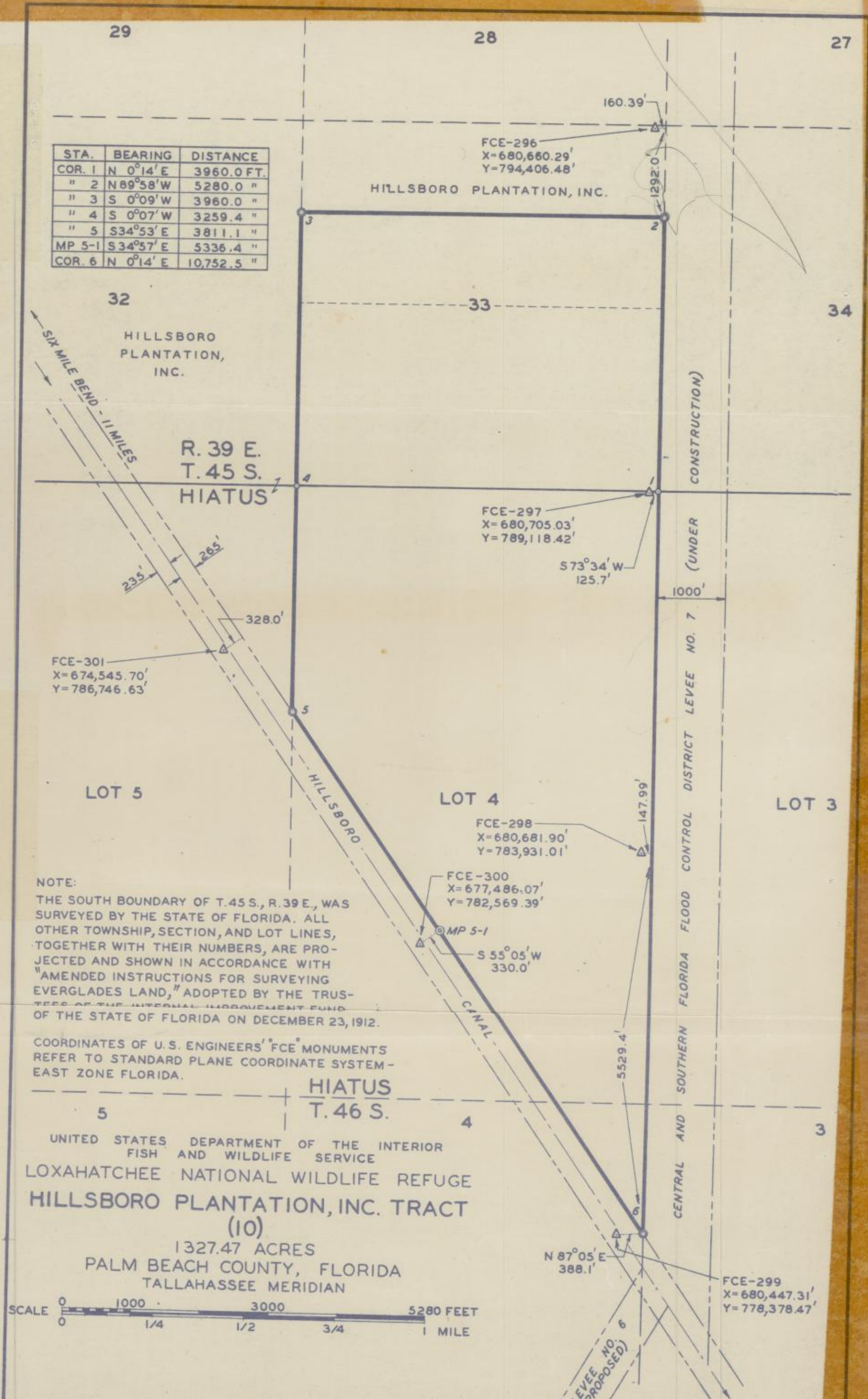


Sup-3398

L-15 SU-3

STA.	BEARING	DISTANCE
COR. 1	N 0°14' E	3960.0 FT.
" 2	N 89°58' W	5280.0 "
" 3	S 0°09' W	3960.0 "
" 4	S 0°07' W	3259.4 "
" 5	S 34°53' E	3811.1 "
MP 5-1	S 34°57' E	5336.4 "
COR. 6	N 0°14' E	10,752.5 "

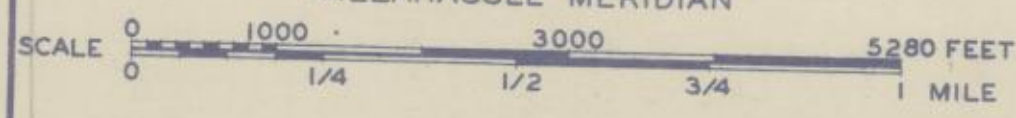


NOTE:  
 THE SOUTH BOUNDARY OF T. 45 S., R. 39 E., WAS SURVEYED BY THE STATE OF FLORIDA. ALL OTHER TOWNSHIP, SECTION, AND LOT LINES, TOGETHER WITH THEIR NUMBERS, ARE PROJECTED AND SHOWN IN ACCORDANCE WITH "AMENDED INSTRUCTIONS FOR SURVEYING EVERGLADES LAND," ADOPTED BY THE TRUSTEES OF THE INTERNAL IMPROVEMENT FUND OF THE STATE OF FLORIDA ON DECEMBER 23, 1912.

COORDINATES OF U.S. ENGINEERS' FCE MONUMENTS REFER TO STANDARD PLANE COORDINATE SYSTEM - EAST ZONE FLORIDA.

HIATUS  
 T. 46 S.

UNITED STATES DEPARTMENT OF THE INTERIOR  
 FISH AND WILDLIFE SERVICE  
 LOXAHATCHEE NATIONAL WILDLIFE REFUGE  
 HILLSBORO PLANTATION, INC. TRACT  
 (10)  
 1327.47 ACRES  
 PALM BEACH COUNTY, FLORIDA  
 TALLAHASSEE MERIDIAN



THIS MAP was compiled from: surveys made by me February 10-24, 1954, and official records in the files of the Fish and Wildlife Service.

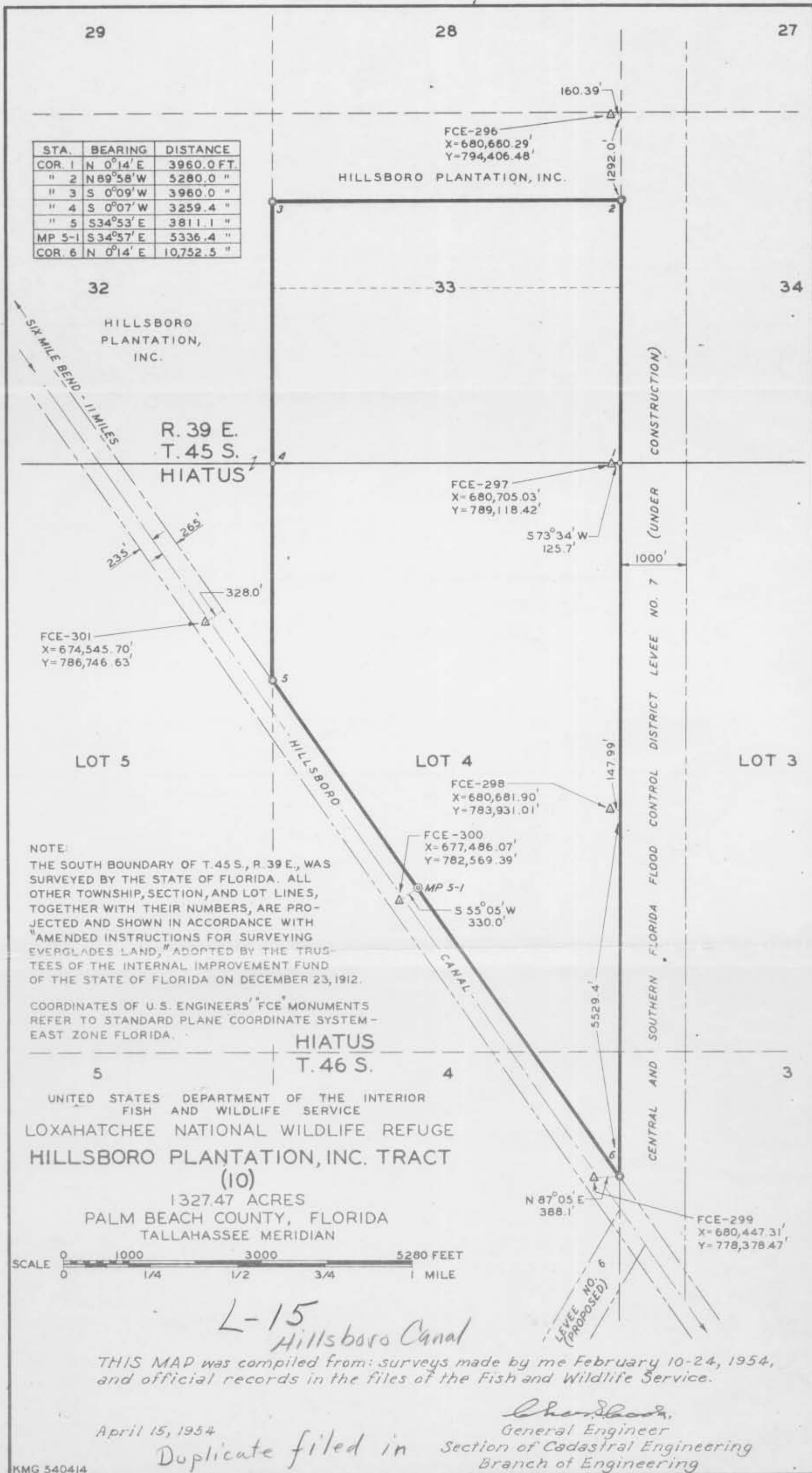
April 15, 1954

*Chas. Shook*  
 General Engineer  
 Section of Cadastral Engineering  
 Branch of Engineering

KMG 540414

L-15-SU-3

L-15 Hillsboro Canal  
also L-7



L-15 Hillsboro Canal

THIS MAP was compiled from: surveys made by me February 10-24, 1954, and official records in the files of the Fish and Wildlife Service.

April 15, 1954

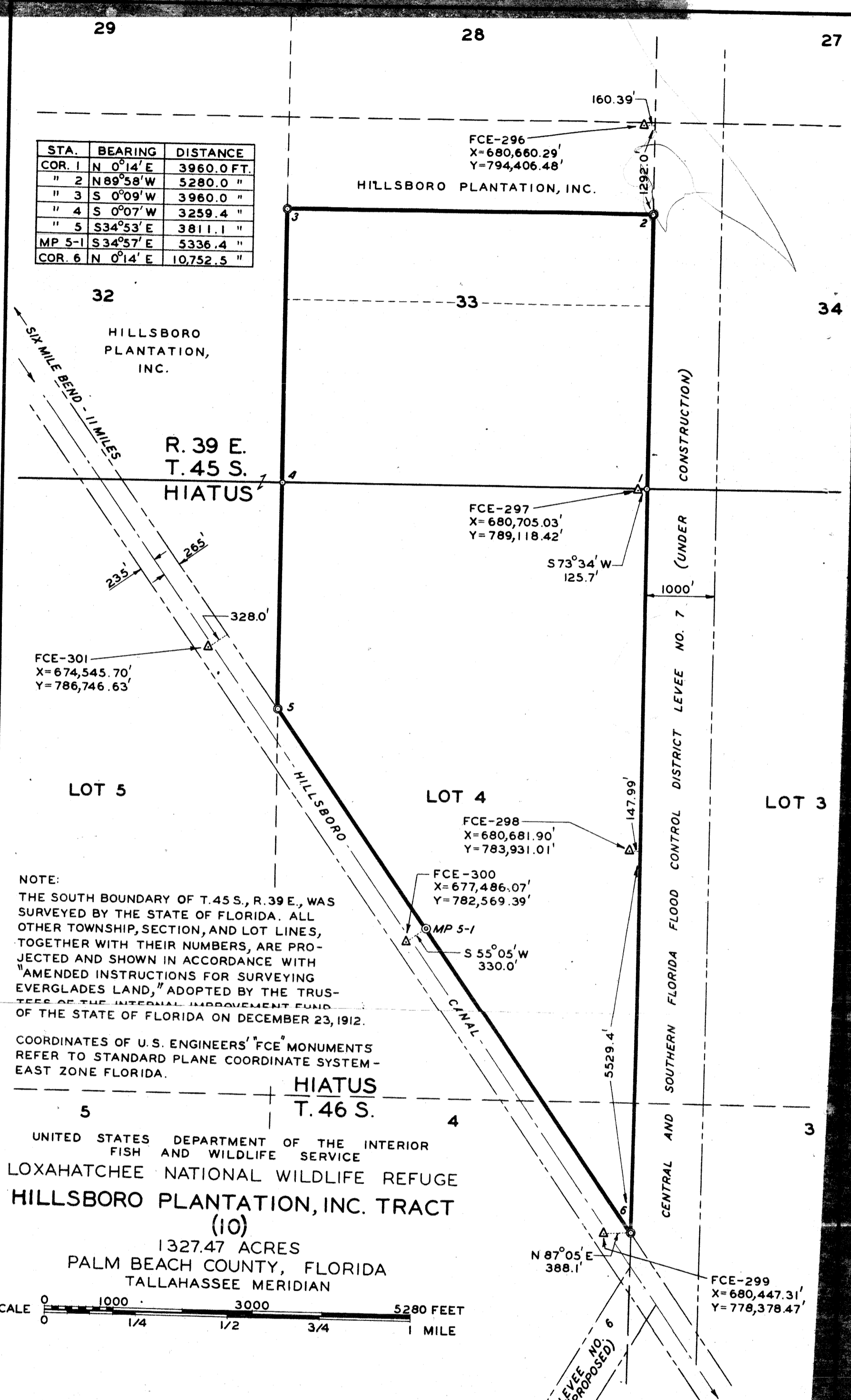
Duplicate filed in

*Chas. Shook*  
 General Engineer  
 Section of Cadastral Engineering  
 Branch of Engineering

*m*

1-10 84-3

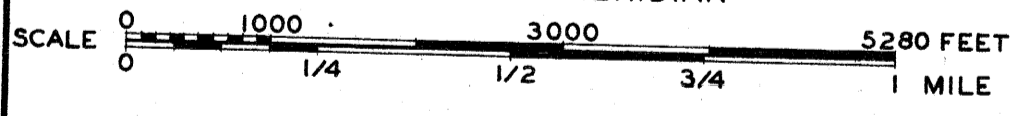
STA.	BEARING	DISTANCE
COR. 1	N 0°14' E	3960.0 FT.
" 2	N 89°58' W	5280.0 "
" 3	S 0°09' W	3960.0 "
" 4	S 0°07' W	3259.4 "
" 5	S 34°53' E	3811.1 "
MP 5-1	S 34°57' E	5336.4 "
COR. 6	N 0°14' E	10,752.5 "



NOTE:  
 THE SOUTH BOUNDARY OF T. 45 S., R. 39 E., WAS SURVEYED BY THE STATE OF FLORIDA. ALL OTHER TOWNSHIP, SECTION, AND LOT LINES, TOGETHER WITH THEIR NUMBERS, ARE PROJECTED AND SHOWN IN ACCORDANCE WITH "AMENDED INSTRUCTIONS FOR SURVEYING EVERGLADES LAND," ADOPTED BY THE TRUSTEES OF THE INTERNAL IMPROVEMENT FUND OF THE STATE OF FLORIDA ON DECEMBER 23, 1912.

COORDINATES OF U.S. ENGINEERS' FCE MONUMENTS REFER TO STANDARD PLANE COORDINATE SYSTEM - EAST ZONE FLORIDA.

5 4 3  
 HIATUS T. 46 S.  
 UNITED STATES DEPARTMENT OF THE INTERIOR  
 FISH AND WILDLIFE SERVICE  
 LOXAHATCHEE NATIONAL WILDLIFE REFUGE  
 HILLSBORO PLANTATION, INC. TRACT (10)  
 1327.47 ACRES  
 PALM BEACH COUNTY, FLORIDA  
 TALLAHASSEE MERIDIAN



THIS MAP was compiled from: surveys made by me February 10-24, 1954, and official records in the files of the Fish and Wildlife Service.

April 15, 1954

*Chen... ..*  
 General Engineer  
 Section of Cadastral Engineering  
 Branch of Engineering

15-50