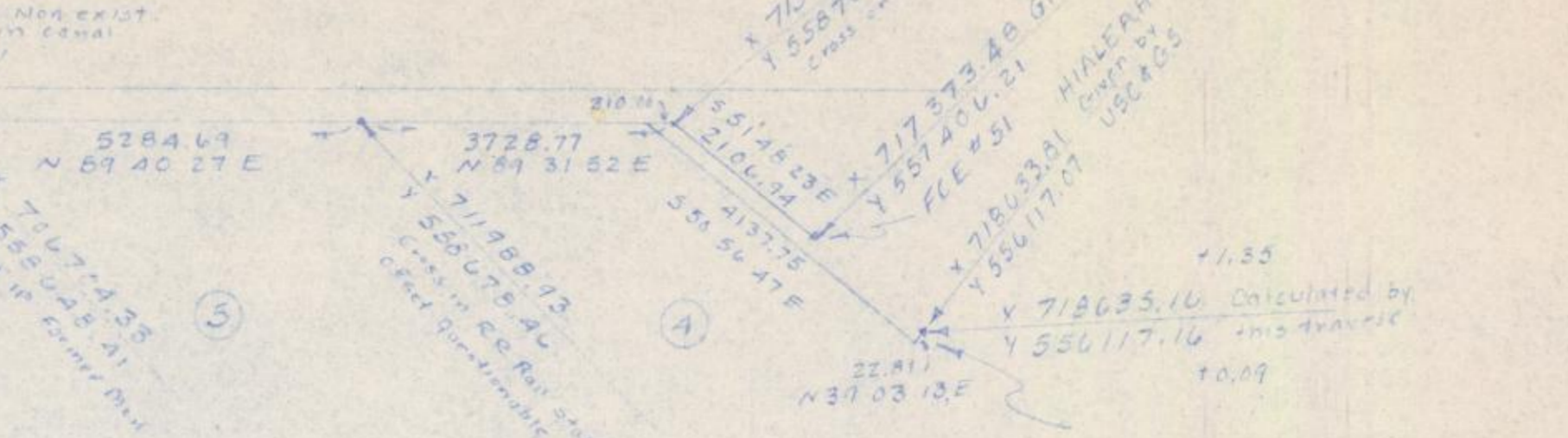
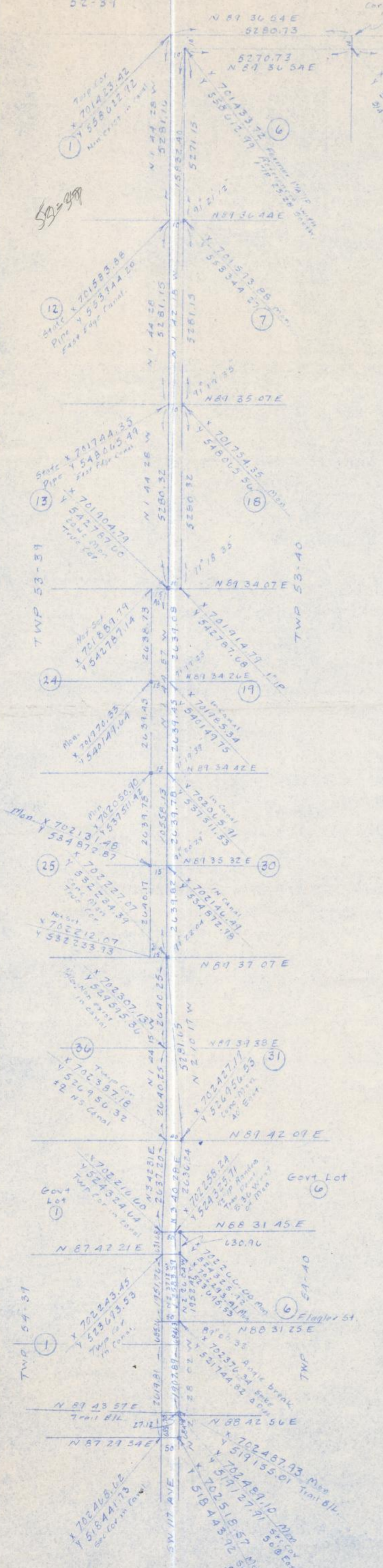


TWP 52-31

TWP 52-40



Note: HIALEAH STATION is in a disturbed state. Surface Monument is gone and Subterranean mark was plowed out by a dozer and set back in what appeared to be the dish shaped hole of its former position.

53-40

Mr. Kelly

TENTATIVE

Sketch of adjusted traverse from Co-ordinated Monument on Tamiami Trail Blk at 117th Ave. North on 117th Ave to NW Corner of Township 53-40 and East along the North line of Township 53-40 to FCE # 51 and to USC 46 Triangulation Station HIALEAH (Disturbed)

Unadjusted traverse failed to close at FCE # 51 by 2.41 EW and 1.52 NS or a degree of accuracy of 1 in 187007.

Angles were adjusted within limits of those observed and the distances were then provided to force a closure, giving tentative value co-ordinates for the entire run subject to minor refinement upon completion of survey of Township 53-40.

All work based on the State Plane Co-ordinate System Florida East Zone

Scale: 1" = 2000'

J.C. Fragier for Dade County

Nov 1949

Ref: Dade County Field Books 468 & 4620