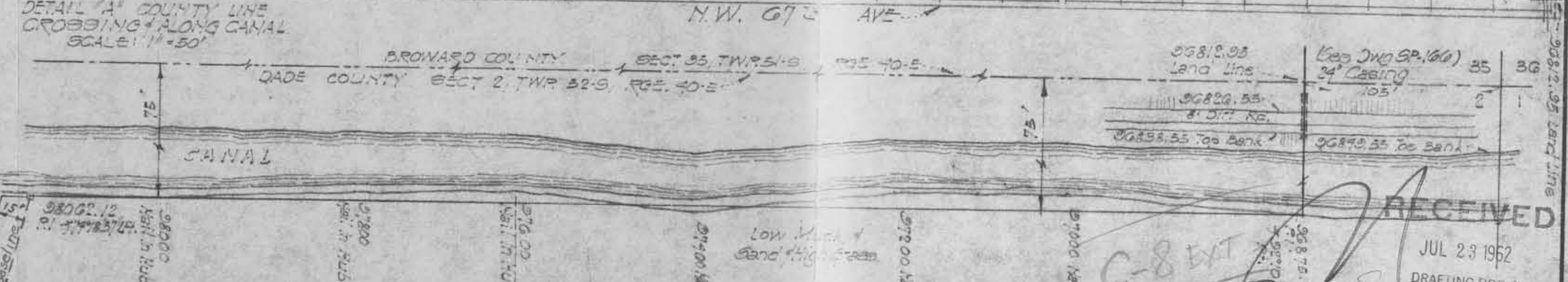
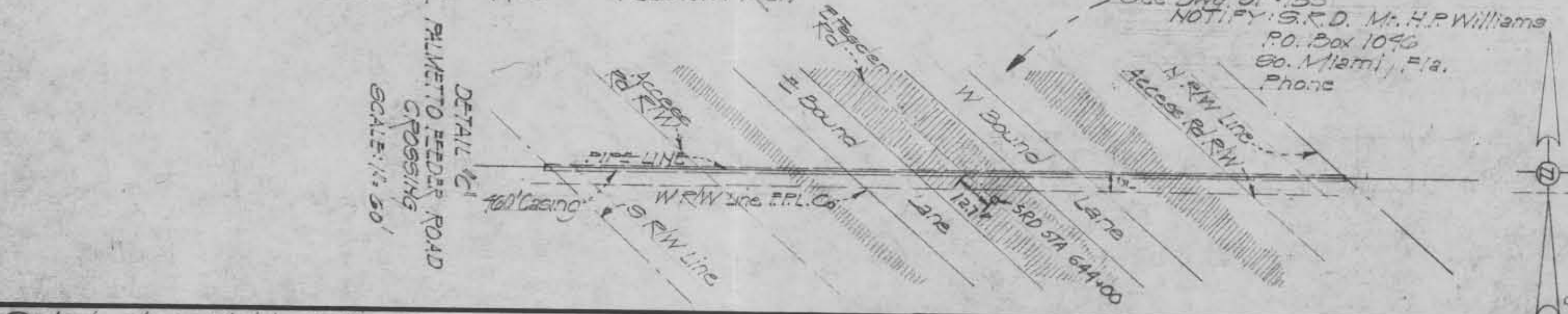
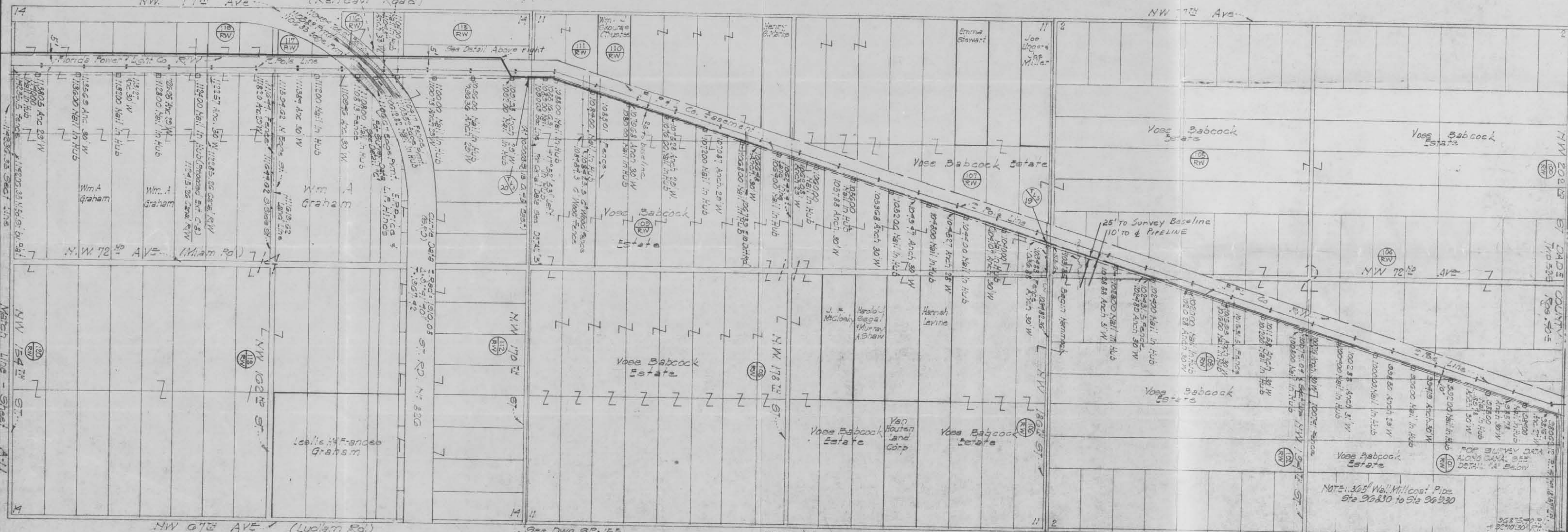
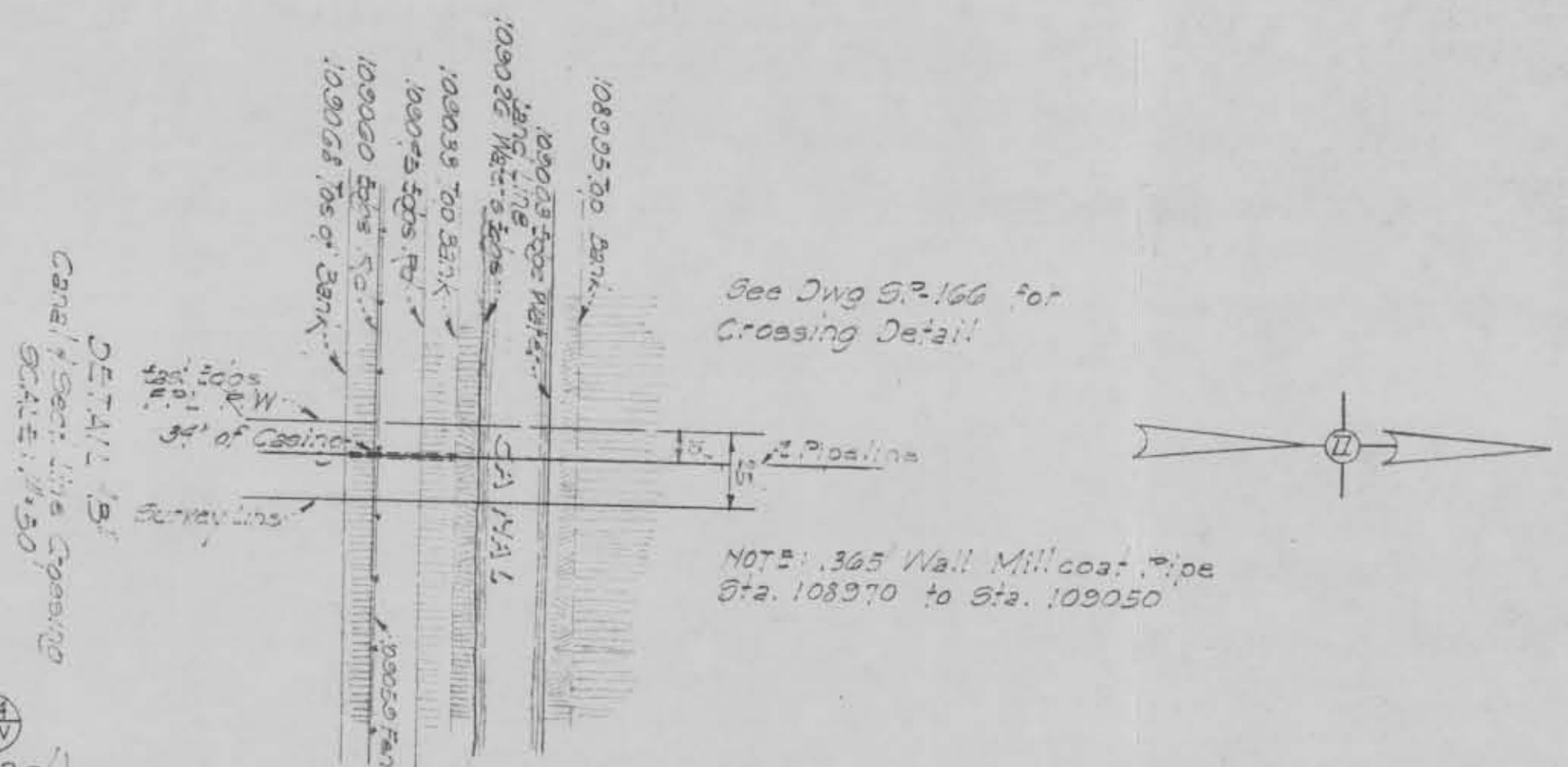


Note: Where pipeline is on West side of F.P.L. R/W (15' permanent easement), temporary 35' construction easement lies entirely on East side of permanent easement or within F.P.L. R/W. Spoil from trench shall be placed West of 1/2 of pipeline and all construction operations & equipment must be done East of 1/2 of pipeline.

NOTE: At Sta. 109198.5 pipeline leaves baseline. For reference, Sta. 109400.6 is directly West of Sta. 109299.5 on baseline. Proceeding South, Sta's. on pipe equal baseline Sta's. plus 101 feet.

Note: Original Survey Base Line is 25' East East of F.P.L. R/W Line in Secs. 2, 11, & 14. Actual Pipe Line to be 10' East of F.P.L. East R/W Line, or in Sec. 14 5' West of F.P.L. West R/W Line.



<p>Indicates Right-of-Way Number</p> <p>Test Lead Sta</p>	DATE	REVISION	BY	DATE	REVISION	BY	<p>EVERGLADES PIPE LINE COMPANY</p>	<p>TITLE OF DRAWING CONSTRUCTION MAP Sec. 2, 11 & 14 Twp. 52-S, Rge. 40-E DADE COUNTY FLORIDA</p>	<p>ISSUE NO. A SHEET OF DRAWING NO. A-10</p>
	DATE	REVISION	BY	DATE	REVISION	BY			

RECEIVED
JUL 23 1952
DRAFTING ROOM
D&S F.C.D.