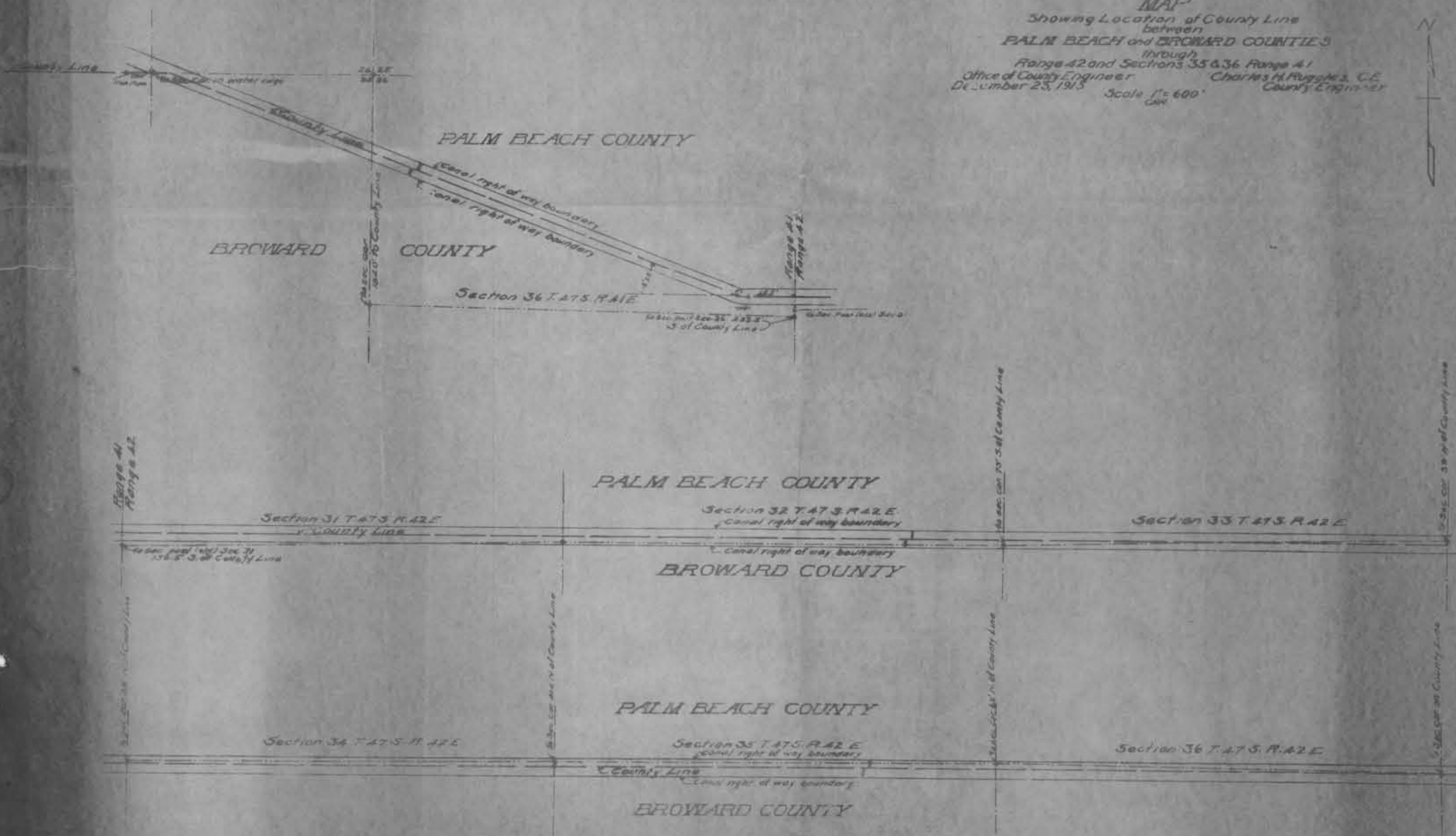


SECTIONS 31, 32, 33, 34  
 35, 36, TWP. 47, RGE. 42

MAP  
 Showing Location of County Line  
 between  
 PALM BEACH and BROWARD COUNTIES  
 through  
 Range 42 and Sections 35 & 36 Range 41  
 Office of County Engineer Charles H. Puggie, C.E.  
 December 25, 1915 Scale 1" = 600'  
 City Engineer



Witnessed Charles H. Puggie, County Engineer and County Surveyor, who being duly sworn deposes and says  
 that he has surveyed the ground under his direction, and the information shown thereon is accurate and  
 correct, and he so depose and believe.  
 Charles H. Puggie  
 County Engineer and County Surveyor  
 December 25, 1915  
 City of Palm Beach, Florida  
 County of Palm Beach, State of Florida

Approved  
 Charles H. Puggie  
 County Engineer