

Vol. 273

F I E L D   N O T E S

## PRELIMINARY STATEMENT

This survey was executed as a state survey in accordance with special instructions from F. C. Elliot, Chief Drainage Engineer for the Trustees of the Internal Improvement Fund of the State of Florida.

NORTH BOUNDARY OF TOWNSHIP 59 SOUTH, RANGE 35 EAST AND  
NORTH BOUNDARY OF SECTION 6 OF TOWNSHIP 59 SOUTH,  
RANGE 36 EAST

The south boundary of Township 58 South, Range 35 East was originally surveyed from west to east by U. S. Deputy Surveyor William Mickler in 1886. Subsequently the south boundary of Township 58 South, Range 35 East was re-established west to east as a dependent re-survey by Norville E. Shearer, Cartographer (Cadastral) in January, 1955.

The re-established south boundary of Township 58 South, Range 35 East is the basis for the survey of Township 59 South, Range 35 East, together with the west boundary of Range 37 East as determining the position for the northeast corner of Township 59 South, Range 35 East and the position in relation to the west boundary of Range 37 East for the southeast corner of Township 58 South, Range 36 East by Mickler. The west boundary of Range 37 East in this locality had been established by surveys from east to west by private surveyors. Lands location and recorded land titles for many years have been in accordance with these private surveys and it is desirable that such land locations and titles be not disturbed.

Prior to beginning the survey, the south boundary of Township 58 South, Range 35 East was examined, the bearings and distances by Shearer compared, and a line projected as a continuing tangent west to east on the bearing by Shearer N. 89° 25' E. to the west boundary of Range 37 East. The south boundary of Township 58 South, Range 36 East had been originally surveyed by Mickler in 1886, but was not re-surveyed by Shearer.

-----  
SECTIONS 1, 2 AND 3 OF TOWNSHIP 60 SOUTH, RANGE 35 EAST

This survey is based upon the survey by J. O. Fries for the State of Florida in 1903, which said survey was for locating the boundary between Townships 60 and 61 South from Range 37 East, west into Range 32 East. Though this survey was not executed by Fries as a Deputy U. S. Surveyor, it has been accepted and used by private landowners for more than fifty years as a basis for land location to the north and south, and has been accepted by the State as a basis for the location and settlement of various land claims approved by the State. To continue this long established practice, the survey of Sections 1, 2 and 3 in Township 60 South, Range 35 East locates the land with respect to the township and range lines and corners in Townships 60 and 61 South.

All of the foregoing is shown in greater detail in "Reconnaissance" accompanying the field notes.



F I E L D N O T E S

## NORTH BOUNDARY TOWNSHIP 59 SOUTH, RANGE 35 EAST

The survey was commenced at the corner marking Sections 35 and 36 on the south boundary of Township 59 South, Range 35 East, Tallahassee Meridian and Parallel, as re-established by Norville E. Shearer, Cartographer (Cadastral) in January, 1955.

From this corner, Shearer's line was re-traced to the southeast-southwest corner of Township 58 South, Ranges 35 and 36 East, respectively, on the bearing N.  $89^{\circ} 25'$  E. Search was made along the line for evidence of its original location, and at the proportionate distances, this survey 81.41 chs. to Shearer's 81.43 chs. Temporary stakes were set for corner positions to sections in Township 58 South, Range 36 East. Search failed to disclose evidence of the original location. The line was run through open glades with a few ledges of small pine and palmetto and several small depressions with thin saw-grass stands.

From the temporary southeast corner of Township 58 South, Range 36 East a random line was run for reconnaissance purposes N.  $0^{\circ} - 25'$  W. a distance of 81.41 chs. and a stake set at the position for a temporary corner to  $\frac{25}{36}$

Thence the line was continued N.  $0^{\circ} - 25'$  W. a distance of 81.41 chs. and a stake set at the position for temporary corner to  $\frac{24}{25}$  Diligent search was made for evidence of

the original line and corners; none was found. This line passes through small pines and palmetto, small myrtle and open glades. The line was not explored further.

From the temporary corner N.E. of Township 58 South, Range 36 East the line was continued N.  $89^{\circ} 25'$  E. along what will become the south boundary of a hiatus known to exist but not hitherto surveyed, between Ranges 36 and 37 East, in corresponding townships to west and east to its intersection with the west line of Township 58 South, Range 37 East, a distance of 14.33 chs., hiatus in Range 36-1/2 E., to north and Township 59 South, Range 36 East to south.

Since the east-west location of Township 59 South in Ranges 35 and 36 East is to be based on the west line of Range 37 East, the point where the north boundary of Township 59 South, Range 36 East projected east intercepts the west boundary of Range 37 East becomes the position for the northeast corner of Township 59 South, Range 36 East and is the point from which the northeast corner of Township 59 South, Range 35 East and north boundary of Section 6 of Township 59 South, Range 36 East is to be located.

From the position for the northeast corner of Township 59 South, Range 36 East a reconnaissance line was run south for testing this position in relation to private surveys to the southward, as will appear in greater detail in "Reconnaissance" accompanying these field notes.

-----  
NORTH BOUNDARY TOWNSHIP 59 SOUTH, RANGE 35 EAST

The survey was begun at the point on the west boundary of Township 58 South, Range 37 East hereinbefore described as the position of the northeast corner of Township 58 South, Range 36 East.

Thence by reverse bearing S.  $89^{\circ} 25'$  W. a distance of 480 chs. to the northeast-northwest corner of Township 59 South, Ranges 35 and 36 East respectively. Set 1-1/4 inch



iron pipe with brass cap

Marked

Chains

1	6
R. 35 E.	R. 36 E.
T. 59 S.	

Thence S. 89° 25' W.

6.82 Leave open glades, enter pipe and palmetto ledge.

14.03 Leave ledge. Into open glades.

21.21 Enter pipe and palmetto island.

22.79 Southeast corner of T. 58 S., R. 35 E.  
Re-established by Shearer in 1955.  
Concrete monument with standard brass disc,

Marked

T58S	
R35E	R36E
S36	S31
1955	

51.06 Leave pine and palmetto island for open glades.

80 Set 1-1/4 inch iron pipe with brass cap,

Marked

2	1
---	---

Thence S. 89° 25' W.

In open glades, scattered pine and low palmetto.  
Shallow marl and rock outcrop.

80 Set 1-1/4 inch iron pipe with brass cap,

Marked

3	2
---	---

Thence S. 89° 25' W.

In open glades, scattered pine and low palmetto.  
Shallow marl and rock outcrops.

80 Set 1-1/4 inch iron pipe with brass cap,

Marked

4	3
---	---

Thence S. 89° 25' W.

0.80 Open glades to low sawgrass.  
Deeper marl, soft bottom. Water 6" deep.

68.94 Enter small willow head.

70.20 Leave willow and pass on north side of lone  
sabal palm.

80 Set 1-1/4 inch iron pipe with brass cap,

Marked

5	4
---	---

Thence S. 89° 25' W.

In open marsh, 12" of water, very soft marl  
bottom.

80 Set squared lighterwood post

Marked

6	5
---	---



Chains Thence S. 89° 25' W.  
In open glades

16.121 Enter coco plum hammock  
18.090 Leave same for open glades

39.712 Enter hardwood ledge lying north and south  
41.470 Leave same for open glades

58.924 Enter mangrove slough lying northeast and  
southwest  
59.424 Leave same for open glades with scattered  
mangrove

80.000 Set 1-1/4" galvanized pipe 5' long, extends  
2-1/2' above ground for northwest corner of  
Section 6. Not marked.

Continue running S. 89° 25' W. for tie with  
Shearer's southwest corner of Township 58 S.,  
Range 35 E.

31.394 Point 0.106 chains south of concrete monument  
with standard General Land Office disc,

Marked

	T58	
R34		R35
36		31
<hr/>		
1955		

-----

NORTH BOUNDARY SECTION 6, TOWNSHIP 59 SOUTH,  
RANGE 36 EAST

From Northwest corner T. 59 S., R. 36 E.  
N. 89° 25' E.

80 Set 1-1/4 inch iron pipe with brass cap,  
Marked

6		5
<hr/>		
T59S - R36E		

-----

EAST BOUNDARY OF TOWNSHIP 59 SOUTH, RANGE 35 EAST

Commence at NE corner of Township.

Thence S. 0° 00' 09" W.  
In open glades. Thin marl soil. Rock outcrops.

80 Set 1-1/4 inch iron pipe with brass cap,

Marked 

1	
12	

-----

Thence S. 0° 00' 09" W.

1.70 North edge of rock reef 0.5 chains wide running  
southeasterly and northwesterly with willow and  
myrtle growth.

30.20 Enter west end of myrtle and palmetto island.

32.20 Leave island for open glades.

38.20 Enter southwest prong of myrtle and palmetto  
island about 1 chain east of west end.

40.50 Leave island for open glades.



## Chains

- 80 Set 1-1/4 inch iron pipe with brass cap,  
Marked  $\frac{12}{13}$   
Thence S. 0° 00' 09" W.  
In open glades
- 21.80 Enter east end of small myrtle and bay island.
- 22.80 Leave island for open glades.
- 38.36 Center of Ingraham Highway.
- 40 Set 1-1/4 inch iron pipe with brass cap for  
quarter section corner,  
Marked  $\frac{13}{13}$  1/4  
Open glades. Shallow marl soil.
- 80 Set 1-1/4 inch iron pipe with brass cap,  
Marked  $\frac{13}{24}$   
Thence S. 0° 00' 09" W.  
In open glades. Shallow marl soil. Water 8"  
deep.
- 80 Set 1-1/4 inch iron pipe with brass cap  
Marked  $\frac{24}{25}$   
Thence S. 0° 00' 09" W.  
In open glades. Shallow marl soil. Water 8"  
deep.
- 80 Set 1-1/4 inch iron pipe with brass cap,  
Marked  $\frac{25}{36}$   
Thence S. 0° 00' 09" W.  
In open glades. Shallow marl soil. Water 8"  
deep.
- 39 Beginning of scattered stunted mangrove and more  
frequent hammocks
- 54.50 Enter small coco plum hammock
- 55.30 Leave hammock.  
Open water 12" deep. Scattered stunted mangrove  
and frequent hammocks.
- 79 Enter buttonwood and coco plum hammock.
- 80 Set 1-1/4 inch iron pipe with brass cap,  
Marked  $\frac{36}{T.59-1/2}$   
Corner falls 0.75 chs. east of the west end of  
hammock, which is large and runs in a south-  
easterly direction.



The portion of this boundary which was surveyed was started from a point on the centerline traverse of Ingraham Highway calculated to put the position of the section corner between Sections 34 and 35 on the south boundary six miles south of the surveyed north boundary of the township and 2 miles west of the southeast corner of said township.

From point C on traverse. (Reconnaissance)

Thence Grid S.  $85^{\circ} 42' 29''$  E. 1.525 chs. to computed position for section corner.

Set 1-1/4 inch iron pipe with brass cap,

Marked  $\frac{34 \quad | \quad 35}{H.59-1/2}$

Corner is in stunted mangrove. Water 12" deep. Marl bottom.

Thence N.  $89^{\circ} 25'$  E.

- 14.50 Enter coco plum and pauritis palm hammock.
- 14.90 Leave hammock. Through stunted mangrove.
- 18 Enter coco plum and pauritis palm hammock.
- 20.10 Leave hammock. Through stunted mangrove.
- 78.50 Enter coco plum and pauritis palm hammock. Hammock runs north and south.
- 80 Set 1-1/4 inch iron pipe with brass cap,

Marked  $\frac{35 \quad | \quad 36}{H.59-1/2}$

Corner falls in hammock which is very rough.

-----  
SOUTH BOUNDARY OF SECTION 36, TOWNSHIP 59 SOUTH,  
RANGE 35 EAST

From Southeast Corner of Section 36  
Thence S.  $89^{\circ} 25'$  W.

- 0.76 Leave hammock for open glades with intermittent hammocks, dwarf mangroves and scattered dwarf sawgrass, shallow marl, rock outcrops.
- 61.45 Enter small hardwood hammock
- 62.38 Leave same. Terrain as above
- 63.92 Enter pauritis palm and hardwood hammock
- 64.62 Leave same. Terrain as above
- 76.80 Enter hardwood hammock, very heavy growth, lying northeast and southwest
- 80 1-1/4 inch galvanized pipe, southeast corner of Section 35 established by me on June 24, 1955.

-----  
From southwest corner of Section 34

Thence S.  $89^{\circ} 25'$  W.

1.52

Center of Ingraham Highway.



## Chains

- Through stunted mangrove. Water 12" deep.
- 12 Enter buttonwood hammock.
- 13.90 Leave hammock for stunted mangrove. Water 12" deep.
- 29.80 Enter buttonwood hammock on south end.
- 31.80 Leave hammock for stunted mangrove. Water 24" deep.
- 61.50 Open water 2 feet deep.
- 67.50 Leave open water, enter heavy buttonwood ridge.
- 75.50 Leave ridge. Enter heavy sawgrass.
- 80 Set 1-1/4 inch iron pipe with brass cap,

Marked  $\frac{33 \mid 34}{H. 59-1/2}$

Corner falls in rocky opening with heavy sawgrass around. Due to adverse conditions of growth, water, insects and terrain, we consider it impractical to attempt further progress in this line westward.

-----

TOWNSHIP 60 SOUTH, RANGE 35 EAST, NORTH BOUNDARY  
E. 3 MILES, WEST BOUNDARY N. 1/2 MILE  
SECTION 3.

The position for the NW corner of Section 3, T. 60 S., R. 35 E. has been determined as described in "Reconnaissance". Since it is completely impractical to reach that position by the calculated township and range line, distances and bearings, and since the corner is near Ingraham Highway, its position was further determined with reference to related coordinate points on Ingraham Highway traverse. To mark the corner, a 1-1/4 inch iron pipe with brass cap

Marked  $\frac{T. 59-1/2}{4 \mid 3}$   
60-35

Thence S. 89° 38' 26" E.

- 19.79 To point "A" Ingraham Highway traverse. This point is witnessed as follows:  
Iron pipe S. 33° 32' East 0.758 chs.  
Iron pipe N. 33° 32' West 0.864 chs.  
Straight line between SE pipe and NW pipe.  
Traverse point from S.E. and N.W. pipes 0.758 chs. and 0.864 chs. respectively.  
Point is further described for witness search as 45.71 chs. SW from intersection in T. 59-1/2 South of the north-south northeast-southwest tangents Ingraham Highway.

- 80 Corner Sections Marked  $\frac{T. 59-1/2}{3 \mid 2}$   
Set 1-1/4 inch iron pipe with brass cap.  
SECTION 2  
From NW corner S. 89° 38' 26" E.

- 80 Marked  $\frac{H. 59-1/2}{2 \mid 1}$   
60-35  
Set 1-1/4 inch iron pipe with brass cap.



Chains

## SECTION 3, N. 1/2 WEST BOUNDARY

From NW corner S. 0° 24' 50" E.

13.83 To point "B" in center line Ingraham Highway.

40 Quarter Section corner.

Set 1-1/4 inch iron pipe with brass cap,

Marked 1/4 - 3

The above lines traverse dense growth of mangrove, myrtle, occasional small spots of heavy sawgrass and small open but deep pools of water 18" to 48" deep. Soft marl bottom.



## RECONNAISSANCE

- - - - -

Affecting: Township 58 South, Range 37 East  
 Township 59 South, Ranges 35, 36, 37 East  
 Township 59-1/2 South, Ranges 35, 36 East  
 Township 60 South, Ranges 33, 34, 35, 36 East  
 Township 61 South, Ranges 33, 34 East

At the position for northeast corner Township 59 South, Range 36 East an angle was turned from the projected tangent of south boundary Township 58 South, Range 35 East, bearing by Shearer N. 89° 25' East, for a bearing south, which is the bearing shown by private surveys for west boundary of Township 58 South, Range 37 East.

From the above position a random line was run south which developed the following:

197.56 chs. north shoulder Ingraham Highway.

Private surveys show the road at this location to run east and west on south boundary Township 58 South, Range 37 East, and west through Township 59 South, Range 36 East on the east-west quarter section line through Sections 13 to 18, according to private survey in this township.

At 203.37 chs. west edge of old ditch, which is the historic line between Ranges 36 and 37 East as established by private surveyors in the survey of privately owned lands. These surveys were projected from east to west from survey by the United States in Range 38 E. Based on these private surveys, lands are located, titles held, and plats and instruments recorded in the public records of Dade County, Florida, since many years back.

So much for the test of the position for the northeast corner of Township 59 South, Range 36 East.

In order to correlate the lines and positions in Townships 58 and 59 South, in Ranges 35 and 36 East, with Township 58 South, Range 37 East, with Township 59-1/2 South in Ranges 35 and 36 East, and with township line between Townships 60 and 61 South, Ranges 33 and 34 East, a traverse was projected generally along the center line of the road known as Ingraham Highway from the east line of Township 58 South, Range 37 East to the southeast corner of Section 1, Township 61 South, Range 33 East, as established by J. O. Fries for the State of Florida in 1903.

Since the original traverse described distances in feet and bearings based on the Florida Grid, East Zone, all distances and bearings affecting such traverse are so entered. A transit adjusted closed traverse of this line is shown. The traverse was commenced at the FCE Monument Number 1033 as established by the Corps of Engineers, U. S. Army, near the northeast corner of Section 12, T. 58 S., R. 37 E., and referred to FCE Monument Number 1034 for the grid meridian. These are listed as third order stations. The line thence was run to intersection with Ingraham Highway and thence west and south along the tangents of the Highway to its intersection with the west line of Township 58 S., Range 37 E. The centerline traverse of the Ingraham Highway was thence continued west and south with temporary angle points thereon to triangulation station "Coot" established by the U. S. Coast and Geodetic Survey on the shore of Cape Sable near the abandoned village of Flamingo. The meridian was checked from "Coot" to the azimuth station on "Oyster Keys."

The road traverse was thence continued on to Section corner  $\frac{1}{12} \frac{6}{7}$  Township 61 South, Range 33/34 East marked



by 1-1/4 inch pipe and a buttonwood post as established by Fries in 1903. This survey projected the boundary between Townships 60 and 61 South from the previously surveyed west boundary Township 60 South, Range 37 East, west to the Gulf of Mexico in Range 32 East. This corner was recovered by Biscayne Engineering Company, February 7, 1946. The quarter section corner between Sections 4 and 9, Township 61 South, Range 33 East was re-established from ties thereto by the U. S. Coast and Geodetic Survey in 1934, and its grid position computed. This position was determined from the grid position of "Cape Sable East Base", a cast iron disc set by the Coast and Geodetic Survey in 1855 and recovered in 1934. The position of "Cape Sable Latitude Station" was used for azimuth in the determination of the quarter corner. The line from the quarter corner between Sections 4 and 9 to the southeast corner of Section 1, Township 61 South, Range 33 East was then computed as: S. 89° 48' 22" E. - 18541.776 ft., equal to 280.936 chains, or a proportionate distance of 5297.668 ft., equal to 80.268 chains, per section. A Search was then made for other evidence of the original survey on this line without success, as fire and storms had destroyed physical landmarks, except the roads and canals. One prominent landmark of original line location in this vicinity is the straight reach of graded road running north between Sections 4 and 5 in Township 61 South, Range 34 East and between Sections 32 and 33 and the south 1/4 of Sections 28 and 29, Township 60 South, Range 34 East. This tangent, long accepted as the section line between the sections named, was produced northward 180 chains from the section corner  $\frac{5}{8} + \frac{4}{9}$ , Township 61 South, Range

34 East, according to map by Model Land Company of Company lands made in 1914. Using the tangent of the centerline of the road as the direction of the north and south lines in this area, we find that its bearing is N. 0° 14' 54" West and its northern intersection with road running eastward is 180 chains north of the south boundary of Sections 4 and 5 of Township 61 South, Range 34 East, as run by Fries, recovered as heretofore described, and that the intersection of the North and East road tangents is 160 chains east of the Range line between Ranges 33 and 34 East. As further evidence supporting the correctness of this location, a very old buggy axle was found at the northwest corner of Lot 1, Section 12, Township 61 South, Range 33 East, Fries Survey, which is stated by Ward Roberts, an old inhabitant of the area, to be the axle which he placed in 1908 at the stake set by Fries in 1903 for this point.

Using the orientations above described, this axle is S. 0° 14' 53" W. 19.97 chains and N. 89° 48' 22" W. 19.99 chains from section corner  $\frac{1}{12} + \frac{6}{7}$ , Township 61 South,

Ranges 33/34 East, based on the grid Azimuth, whereas Fries set this corner South 20 chains and West 20 chains from said corner based on true north, as observed by him, the method of determination of which is not given.

The courses, distances and coordinates of the lines and points here discussed accompanying this reconnaissance conform to the State Grid.

From the above data was computed the extension of the range line between Ranges 33 and 34, N. 0° 14' 54" E. a distance of 36,960 ft., equal 560 chains, as the position for the Township corner, N. E. 60-33, N. W. 60-34 from the known section corner  $\frac{1}{12} + \frac{6}{7}$ , Township 61 South, Ranges 33/34 East. Thence by computation the extension of the township line north boundary Township 60 South, S. 89° 48' 22" E. a distance of 47,520 feet, equal 720 chains, to the section corner  $\frac{4}{3}$  north boundary Township 60 South, Range 35 East, from which S. 0° 14' 54" W. 883.31 ft., equal 13.383 chains, to intersection at point "B" on centerline traverse of Ingraham Highway.



## RECONNAISSANCE

TABULATIONS ~~AND~~ FIELD NOTES: RESURVEYS IN T. 59 S., R. 35 & 36 E., T. 60 S., R. 35 E.  
FLORIDA STATE GRID, EAST ZONE. BALANCED AND ADJUSTED TRAVERSE

Angle Point	Description	Bearing	Length Feet	Latitudes		Departures		Coordinates		Remarks
				N	S	E	W	X	Y	
B.S.	FCE # 1034	S. 0° 32' 40" E.						640,562.89	383,697.08	3rd Order Sta. U.S.E.D.
1	FCE # 1033							640,512.36	389,015.79	3rd Order Sta. U.S.E.D.
2		S. 0° 32' 40" E.	2,229.81		2,229.71	21.19		640,533.55	386,786.08	Intersect Ingraham Highway East boundary T.58S. R. 37 E.
		S. 64° 33' 39" W.	4,566.94		1,961.73		4,124.14			
3		S. 41° 25' 36" W.	2,492.99		1,869.25		1,649.51	636,409.41	384,824.35	
4		S. 66° 14' 59" W.	4,551.60		1,833.14		4,166.08	634,759.90	382,955.10	
5		S. 89° 39' 54" W.	4,032.46		23.57		4,032.39	630,593.82	381,121.96	
6		S. 72° 44' 54" W.	239.07		70.90		228.31	626,561.43	381,098.39	
7		S. 30° 20' 48" W.	20,868.91		18,009.54		10,543.58	626,333.12	381,027.49	
8		S. 47° 01' 47" W.	424.66		289.46		310.73	615,789.54	363,017.95	
9		S. 69° 07' 20" W.	437.24		155.82		408.53	615,478.81	362,728.49	
10		S. 89° 52' 13" W.	3,691.98		8.36		3,691.97	615,070.28	362,572.67	
11		N. 89° 00' 02" W.	1,559.86	27.21			1,559.62	611,378.31	362,564.31	
12		S. 84° 12' 36" W.	542.71		54.75		539.94	609,818.69	362,591.52	
13		S. 59° 51' 18" W.	497.68		249.93		430.37	609,278.75	362,536.77	
14		S. 0° 09' 53" E.	368.98		368.98	1.06		608,848.38	362,286.84	
15								608,849.44	361,917.86	West boundary T.58S. R. 37 E.
		S. 89° 52' 03" W.	42,280.45		97.77		42,280.34			



Angle Point	Description	Bearing	Length Feet	Latitudes		Departures		Coordinates		Remarks
				N	S	E	W	X	Y	
16								566,569.10	361,820.09	
"C"		S.0° 00' 50" E.	18,704.00		18,704.00	4.53		566,564.57	343,116.09	
17		S.0° 00' 50" E.	11,059.53		11,059.53	2.69		566,576.32	332,056.56	
"A"		S.56° 08' 05" W.	3,016.88		1,681.13		2,505.06	564,071.26	330,375.43	Intersection N.L. Sec.3,T.60S.,R.35E.
"B"		S.56° 08' 05" W.	1,577.59		879.11		1,309.95	562,761.31	329,496.32	Intersection W.L. Sec.3,T.60S.,R.35E.
18		S.56° 08' 05" W.	6,539.13		3,643.89		5,429.78	557,331.53	325,852.43	
19		S.56° 04' 58" W.	4,853.86		2,708.44		4,027.95	553,303.58	323,143.99	
20		S.56° 03' 45" W.	4,520.10		2,524.08		3,750.92	549,552.66	320,619.91	
21		S.56° 06' 11" W.	7,752.64		4,323.63		6,435.02	543,117.64	316,296.28	
22		S.55° 16' 45" W.	3,392.49		1,932.28		2,788.41	540,329.23	314,364.00	
23		S.54° 55' 32" W.	4,339.86		2,493.86		3,551.77	536,777.46	311,870.14	
24		S.41° 50' 20" W.	4,663.28		3,474.25		3,110.58	533,666.88	308,395.89	
25		S.41° 26' 26" W.	3,870.42		2,901.43		2,561.60	531,105.28	305,494.46	
26		S.78° 57' 48" W.	372.34		71.28		365.45	530,739.83	305,423.18	
27		N.89° 44' 03" W.	5,029.97	23.33			5,029.92	525,709.91	305,446.51	Intersection with E.L.Sec. 29, T. 60 S., R. 34 E.
28		S. 0° 14' 54" W.	9,139.93		9,139.84		39.62	525,670.29	296,306.67	
29		S.30° 42' 40" W.	3,279.59		2,819.64		1,674.93	523,995.36	293,487.03	
		S.54° 36' 48" W.	2,122.10		1,228.89		1,730.07			



Angle Point	Description	Bearing	Length Feet	Latitudes		Departures		Coordinates		Remarks
				N	S	E	W	X	Y	
30										
31		N. 89° 48' 35" W.	2,113.12	7.02			2,113.11	522,265.29	292,258.14	
32		S. 89° 58' 39" W.	3,746.00		1.36	3,745.99		520,152.18	292,265.16	
33	"Coot"	S. 37° 11' 47" W.	1,303.40	1,038.24		787.96		516,406.19	292,263.80	
34	"Oyster Key"	S. 0° 14' 59" W.						515,618.23	291,225.56	3rd Order U.S.C.&G.S. Sta. near "Flamingo"
								515,568.45	279,809.24	3rd Order Azimuth Sta. on "Oyster Key"



TABULATIONS TO FIELD NOTES - SURVEYS IN T. 61 S., R. 33/34 E.  
FLORIDA STATE GRID, EAST ZONE

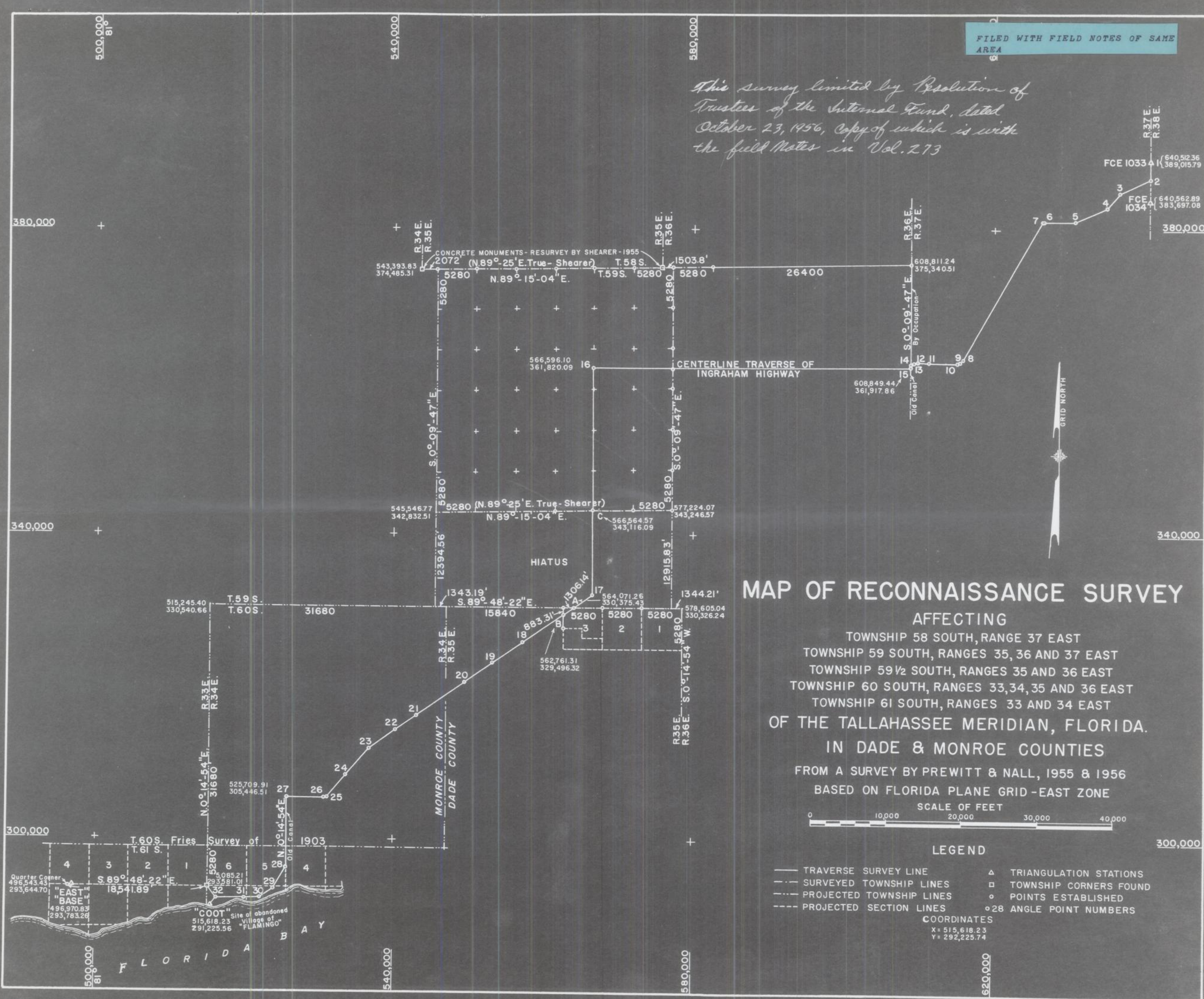
Angle Point	Description	Bearing	Length	Latitudes		Departures		Coordinates		Remarks
			Feet	N	S	E	W	X	Y	
LOCATION OF SECTION CORNER			$\frac{1}{12} \mid \frac{6}{7}$	T. 61 S., R. 33/34 E.						
32	Temp. Point							516,406.19	292,263.80	On Ingraham High- way Traverse
		N.89° 54' 54" W.	1,288.45	1.91		1,288.45				
39								515,117.74	292,265.71	
		N. 1° 25' 01" W.	1,315.70	1,315.30		32.53				
40	Section Corner							515,085.21	293,581.01	$\frac{1}{12} \mid \frac{6}{7}$ T.61 S., R.33/34 E. Fries Sur- vey 1903
LOCATION OF QUARTER CORNER			$\frac{4}{9}$	SECTIONS 4 & 9, T. 61 S., R. 33 E. AND EAST-WEST COURSES						
B.S.	Cape Sable Lat. Sta.							471,206.85	284,526.53	Used for refer- ence only
		N.70° 14' 14" E.								1st Order Sta. U.S.C. & G. Survey
42	East Base							496,970.83	293,783.26	Triangulation Stations
		S.71° 54' 49" W.	449.47		139.56	427.40				1st Order Sta. U.S.C. & G. Survey
43	Quarter Sec. Corner							496,543.43	293,644.70	$\frac{4}{9}$ T.51 S., R. 33 E.
		S.89° 48' 22" E.	18,541.89		63.69	18,541.78				
40	Section Corner							515,085.21	293,581.01	$\frac{1}{12} \mid \frac{6}{7}$ T.61 S., R.33/34 E.



Angle Point	Description	Bearing	Length Feet	Latitudes		Departures		Coordinates		Remarks
				N	S	E	W	X	Y	
RELATION OF NW CORNER OF LOT 1, SEC. 12 TO NE COR. OF SECTION 12, T. 61 S., R. 33 E.										
40	Section Corner							515,085.21	293,581.01	1   6 T. 61 S., 12   7 R. 33/34 E.
		S. 0° 14' 54" W.	1,317.75		1,317.74		5.71			
44	Temp. N.E.Cor. Lot 1							515,079.50	292,263.27	
		N. 89° 48' 22" W.	1,319.17	4.46		1,319.16				
41	Old Axle, NW Cor. Lot 1							513,760.34	292,267.73	Fries Survey Lot 1, Sec. 12, T. 61 S., R. 33 E. in 1903



*This survey limited by Resolution of Trustees of the Internal Fund, dated October 23, 1956, copy of which is with the field notes in Vol. 273*



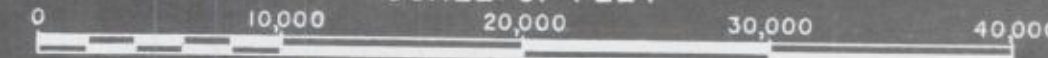
# MAP OF RECONNAISSANCE SURVEY

AFFECTING

TOWNSHIP 58 SOUTH, RANGE 37 EAST  
TOWNSHIP 59 SOUTH, RANGES 35, 36 AND 37 EAST  
TOWNSHIP 59 1/2 SOUTH, RANGES 35 AND 36 EAST  
TOWNSHIP 60 SOUTH, RANGES 33, 34, 35 AND 36 EAST  
TOWNSHIP 61 SOUTH, RANGES 33 AND 34 EAST  
OF THE TALLAHASSEE MERIDIAN, FLORIDA.  
IN DADE & MONROE COUNTIES

FROM A SURVEY BY PREWITT & NALL, 1955 & 1956  
BASED ON FLORIDA PLANE GRID - EAST ZONE

SCALE OF FEET



## LEGEND

- TRAVERSE SURVEY LINE
- - - SURVEYED TOWNSHIP LINES
- - - PROJECTED TOWNSHIP LINES
- - - PROJECTED SECTION LINES
- △ TRIANGULATION STATIONS
- TOWNSHIP CORNERS FOUND
- POINTS ESTABLISHED
- 28 ANGLE POINT NUMBERS

## COORDINATES

X = 515,618.23  
Y = 292,225.74