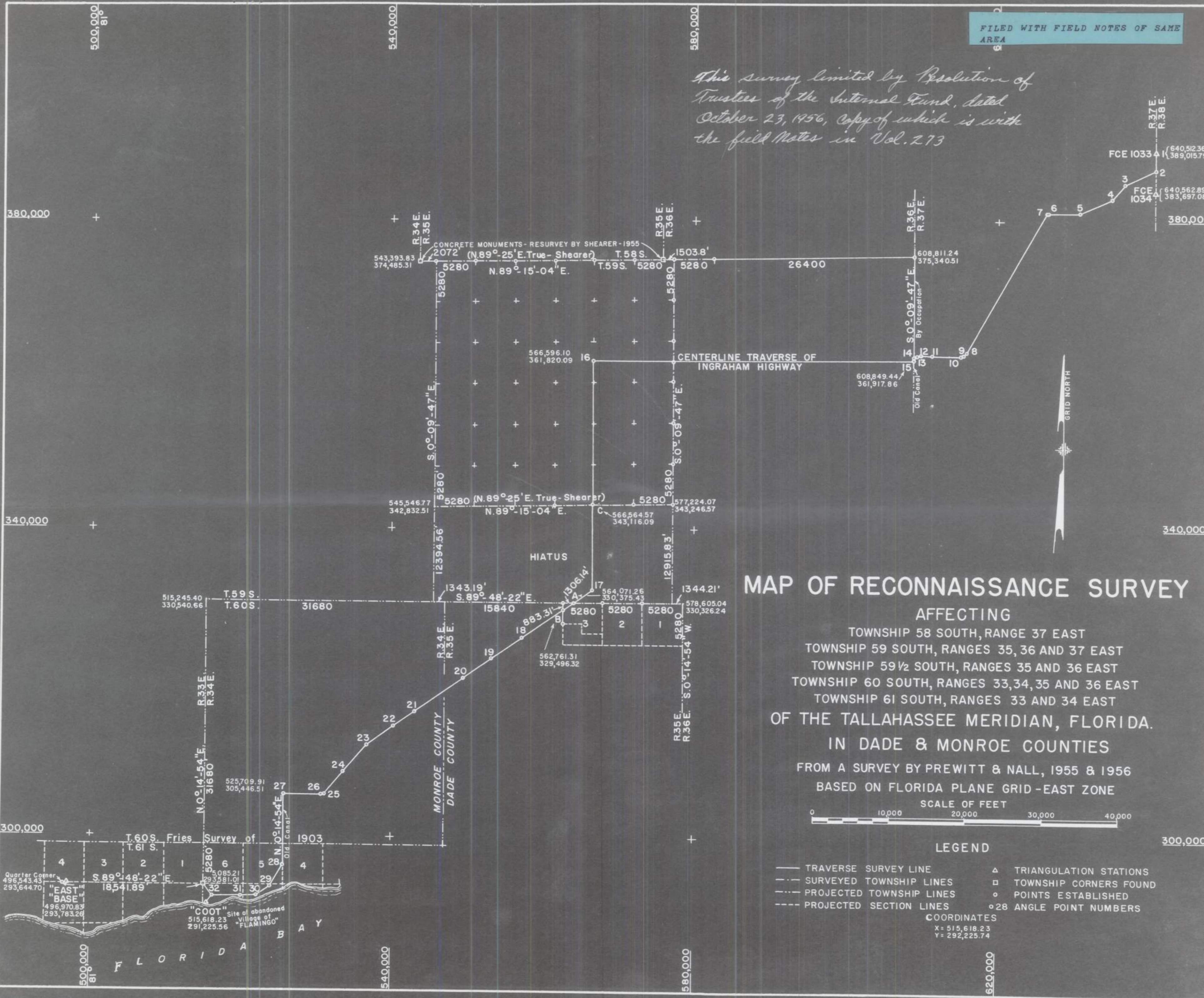
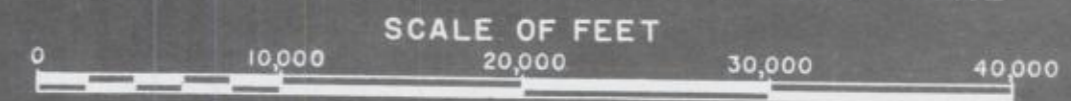


FILED WITH FIELD NOTES OF SAME AREA

This survey limited by Resolution of Trustees of the Internal Fund, dated October 23, 1956, Copy of which is with the field Notes in Vol. 273



MAP OF RECONNAISSANCE SURVEY
AFFECTING
 TOWNSHIP 58 SOUTH, RANGE 37 EAST
 TOWNSHIP 59 SOUTH, RANGES 35, 36 AND 37 EAST
 TOWNSHIP 59 1/2 SOUTH, RANGES 35 AND 36 EAST
 TOWNSHIP 60 SOUTH, RANGES 33, 34, 35 AND 36 EAST
 TOWNSHIP 61 SOUTH, RANGES 33 AND 34 EAST
OF THE TALLAHASSEE MERIDIAN, FLORIDA.
IN DADE & MONROE COUNTIES
 FROM A SURVEY BY PREWITT & NALL, 1955 & 1956
 BASED ON FLORIDA PLANE GRID - EAST ZONE



- LEGEND**
- TRAVERSE SURVEY LINE
 - - - SURVEYED TOWNSHIP LINES
 - - - PROJECTED TOWNSHIP LINES
 - - - PROJECTED SECTION LINES
 - △ TRIANGULATION STATIONS
 - TOWNSHIP CORNERS FOUND
 - POINTS ESTABLISHED
 - 28 ANGLE POINT NUMBERS
- COORDINATES**
 X = 515,618.23
 Y = 292,225.74