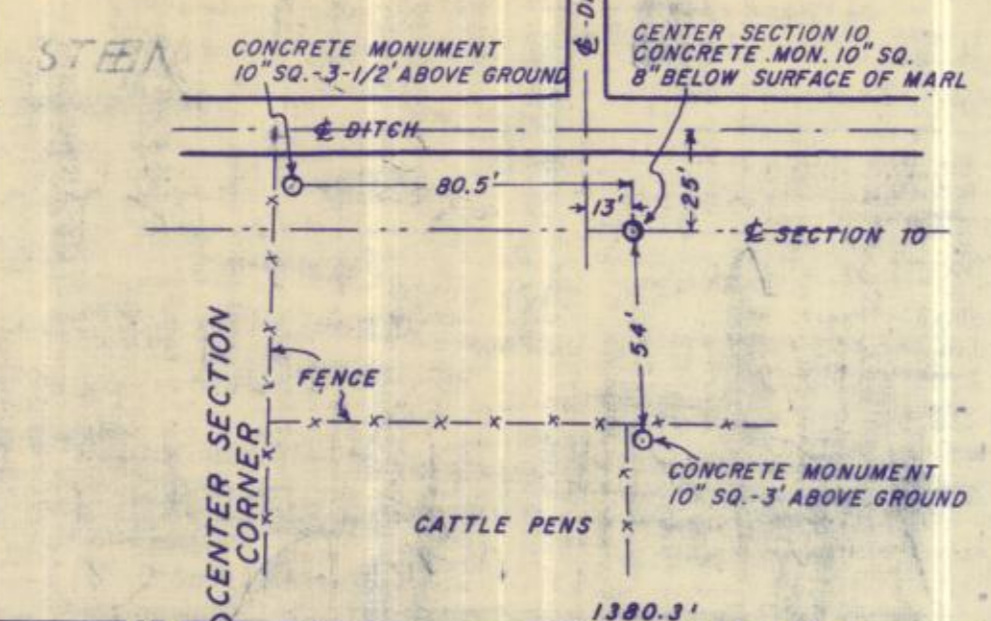


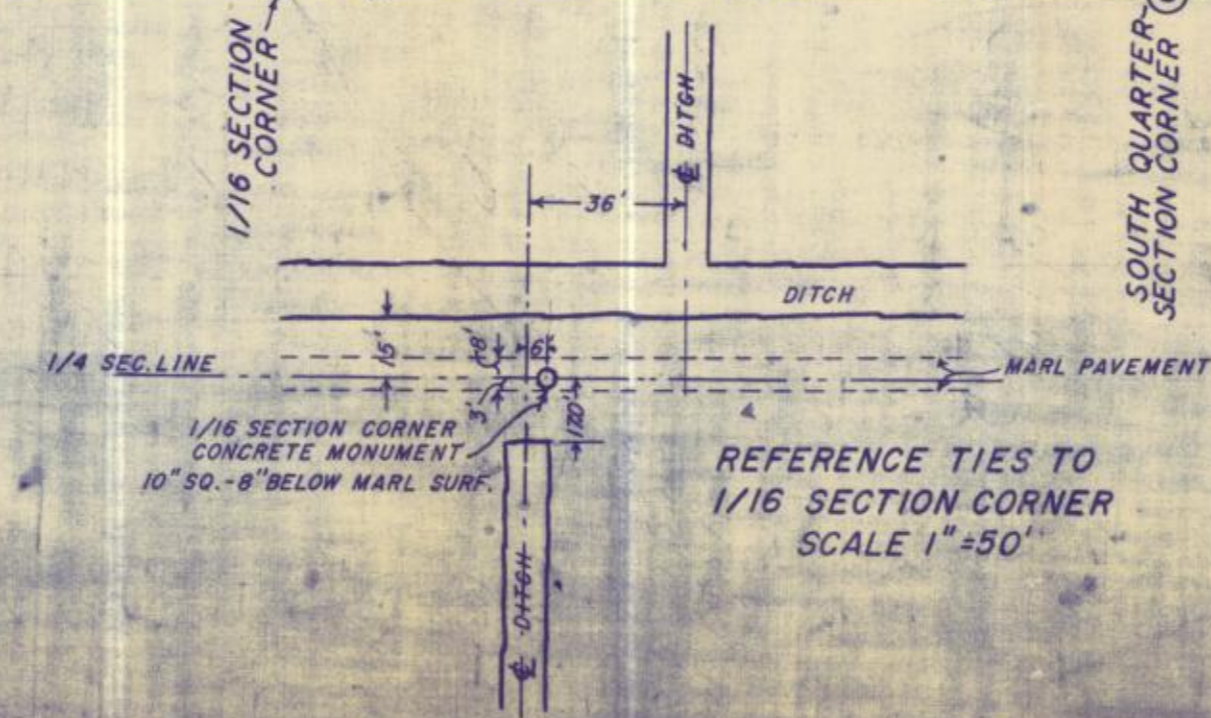
C. J. ASPEY
1/16 SECTION CORNER
EAST 2214.52'

REFERENCE TIES TO CENTER CORNER OF SECTION 10
SCALE 1"=50'



NOTE:

THE NORTH-SOUTH CENTERLINE OF SECTION 10, AS RECOGNIZED BY ALL OWNERS OF PROPERTY AFFECTED THEREBY AND BY WHICH ALL IMPROVEMENTS AND PREVIOUS SURVEYS HAVE BEEN CONTROLLED, IS 241.2 FEET LONGER THAN THAT SET FORTH BY U.S. DEPUTY SURVEYOR PIGEON IN 1913. IN THIS SURVEY WE HOLD THE SOUTH QUARTER-CORNER OF SECTION 10 AS BEING IN THE ORIGINAL POSITION AND CLOSE THE UNADJUSTED G.L.O. MEANDER LINE ON THE RECOGNIZED CENTERLINE OF SECTION 10 BY COMPUTATIONS.



REFERENCE TIES TO 1/16 SECTION CORNER
SCALE 1"=50'

184.20 ACRES
TRUSTEES OF THE I. I. FUND OF FLORIDA

143.87 ACRES
TRUSTEES OF THE I. I. FUND OF FLORIDA

FRITZ STEIN

CERTIFICATION
I HEREBY CERTIFY THAT THIS PLAT IS A TRUE REPRESENTATION OF A RECENT SURVEY MADE UNDER MY DIRECTION AND IS TRUE AND CORRECT TO THE BEST OF MY KNOWLEDGE AND BELIEF.
M. M. Prewitt
M. M. PREWITT, REG. SURVEYOR, FLA. CERT. NO. 738
PREWITT & NALL
ENGINEERS & SURVEYORS
CLEWISTON, FLORIDA.



SURVEY OF PORTIONS OF UNSURVEYED SECTIONS 10, 11, 14 & 15 TWP. 43 S., RGE. 36 E., ON KREAMER ISLAND IN LAKE OKEECHOBEE PALM BEACH COUNTY, FLORIDA.

SCALE IN FEET
0 200 400 600 800 1000

SEPT. 26, 1950.

FOR THE TRUSTEES OF THE INTERNAL IMPROVEMENT FUND OF FLORIDA AND

FRITZ STEIN

SURVEY FILE 43-36 SECTIONS - 10, 11, 14, & 15