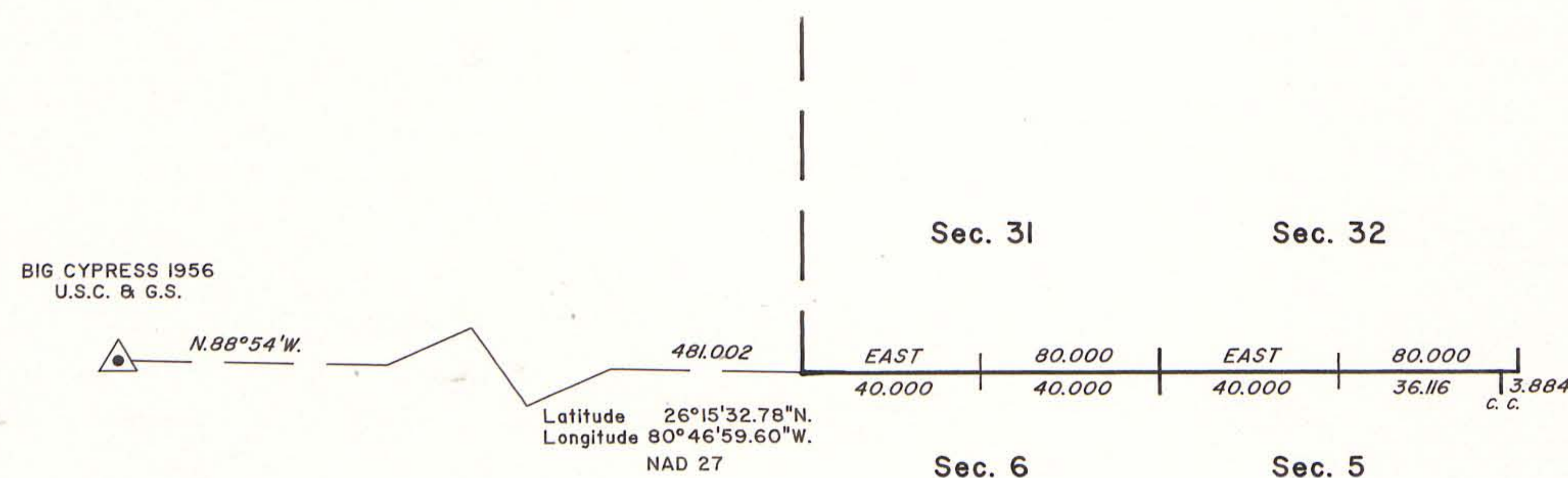


ORIGINAL

TOWNSHIP 48 SOUTH, RANGE 36 EAST, OF THE TALLAHASSEE MERIDIAN, FLORIDA.
DEPENDENT RESURVEY



A history of surveys is contained in the field note record.

This plat represents the dependent resurvey of the west 2 miles of the south boundary of Township 48 South, Range 36 East, Tallahassee Meridian, Florida.

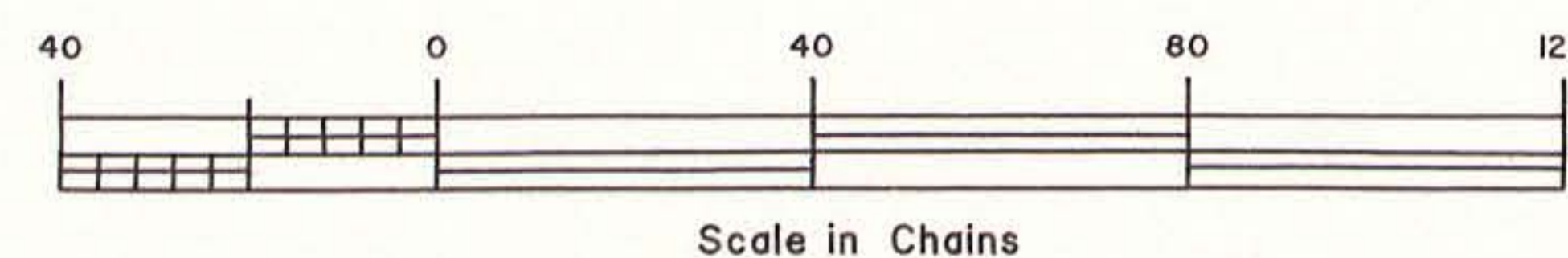
Survey executed by Anthony E. Carrow, Cadastral Surveyor, beginning January 19, 1989 and completed March 8, 1989, pursuant to Special Instructions dated December 9, 1988 and Supplemental Special Instructions dated February 24, 1989 for Group No. 185 Florida.

UNITED STATES DEPARTMENT OF THE INTERIOR
BUREAU OF LAND MANAGEMENT
Alexandria, Virginia April 11, 1990

This plat is strictly conformable to the approved field notes, and the survey, having been correctly executed in accordance with the requirements of law and the regulations of this Bureau, is hereby accepted.

For the Director

Stephen G. Kojan
Chief Cadastral Surveyor
Eastern States Office



R